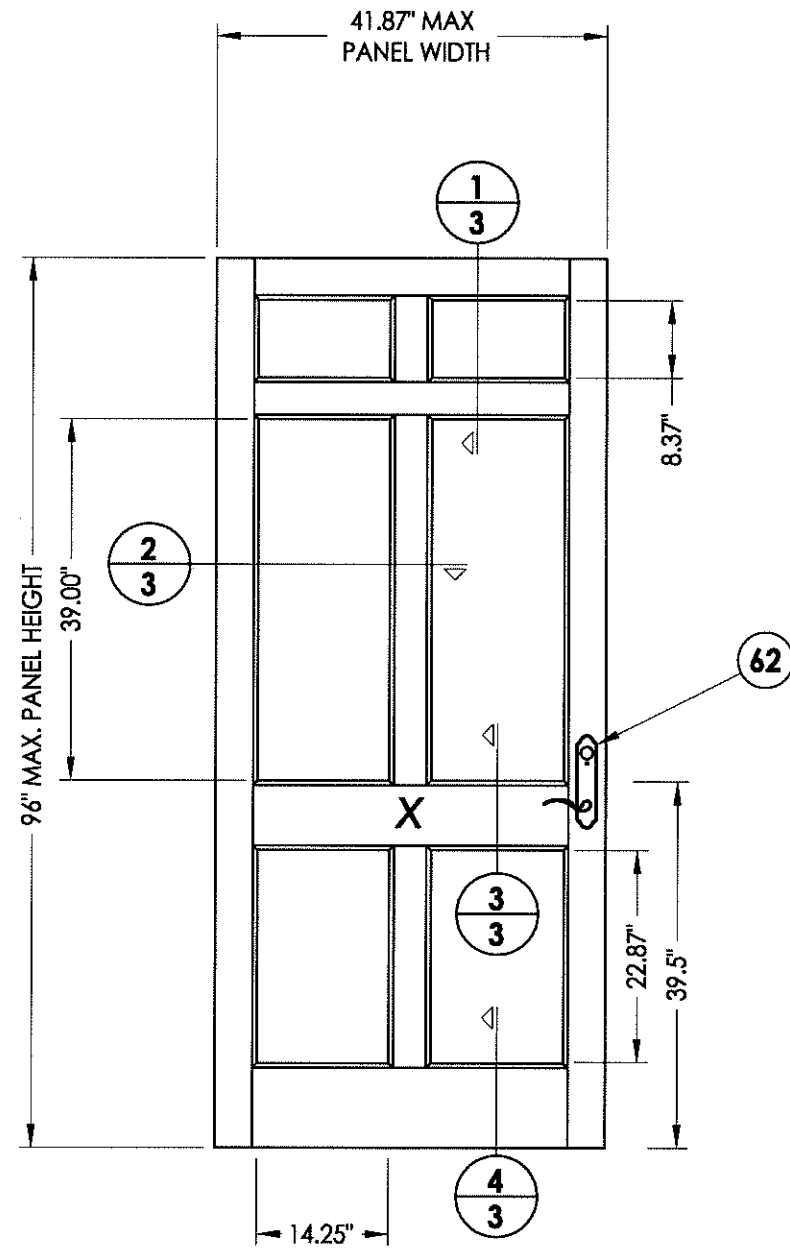
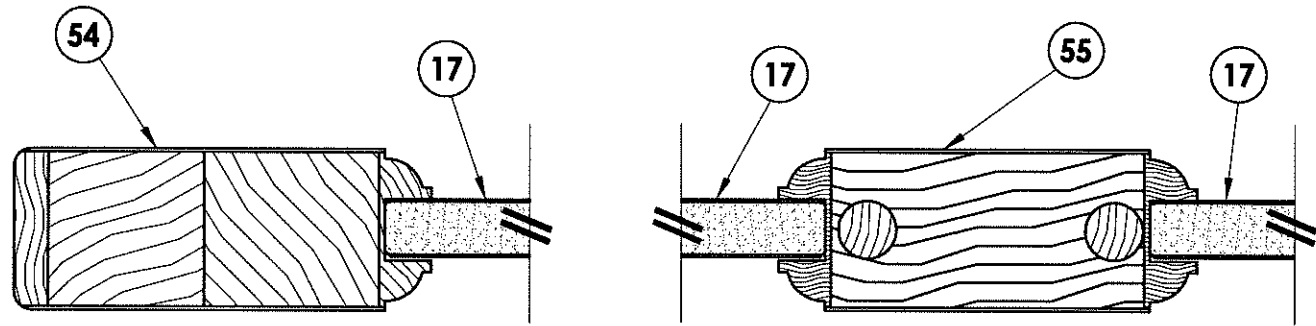


Documents Prepared By: RW BUILDING CONSULTANTS, INC. P.O. Box 230 Valrico FL 33595 Phone No.: 813.659.9197	
Florida Board of Professional Engineers Certificate Of Authorization No. 9813 <i>LFS</i> 10.25.12 Lyndon F. Schmidt, P.E. No. 43409	
PRODUCT: ROGUE VALLEY DOOR	PART OR ASSEMBLY: DOOR PANEL DETAILS (GLAZED)
DATE: 10/06/09	SCALE: N.T.S.
DWG. BY: JK	CHK. BY: LFS
DRAWING NO.: FL-13137.4	REVISIONS
SHEET 2 OF 16	NO. DATE
	1 10/25/12 UPDATE TO 2010 FBC
	LFS BY

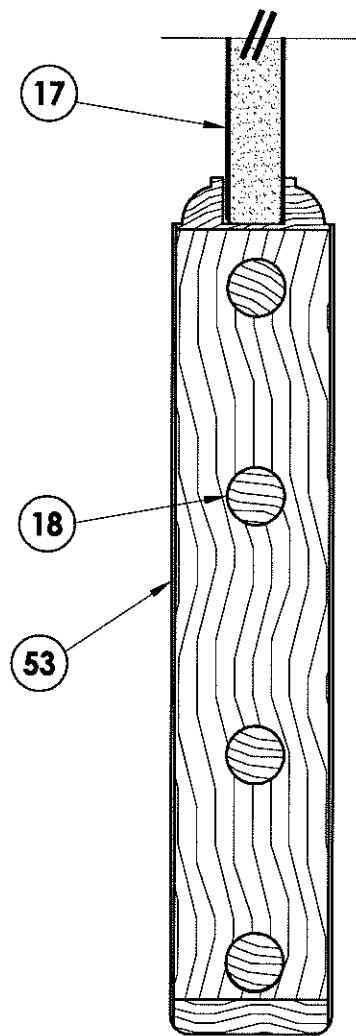
R:\VA - Projects\Project Folders\proj_1401-1500\PF_1482\DWG\RWBC Drawings\FL-13137\FL-13137.dwg, 3.4



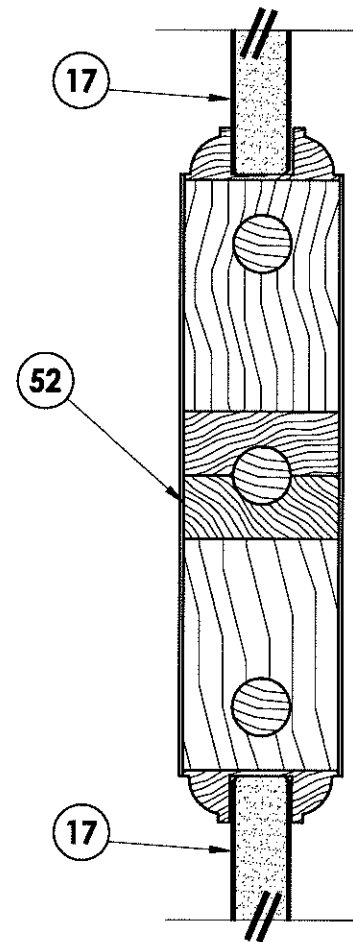
50 DOOR PANEL
 Opaque 42"



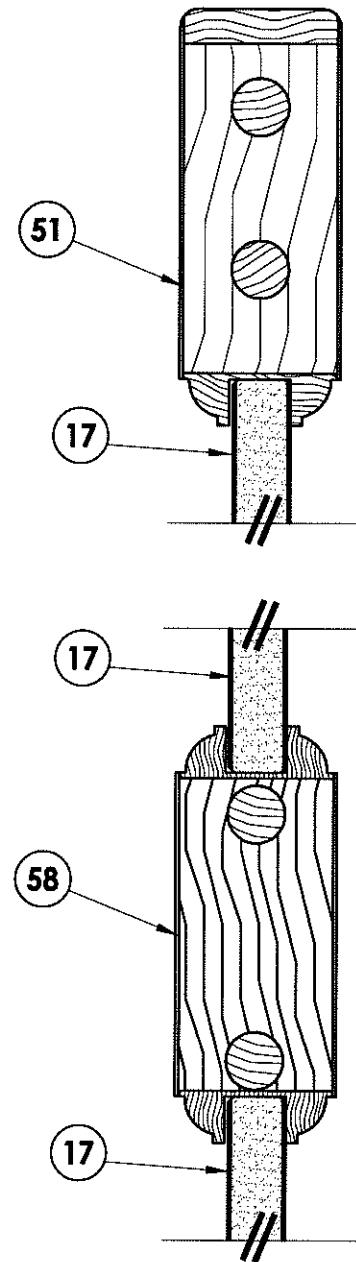
2 HORIZONTAL CROSS SECTION
 3



4 VERTICAL CROSS SECTION
 3



3 VERTICAL CROSS SECTION
 3

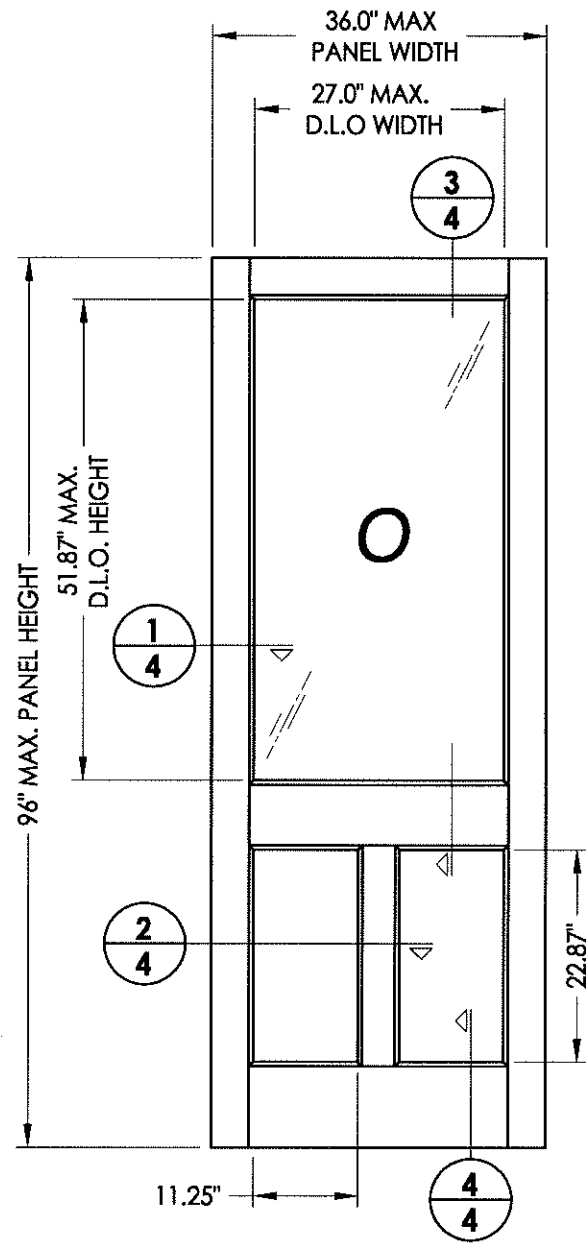


1 VERTICAL CROSS SECTION
 3

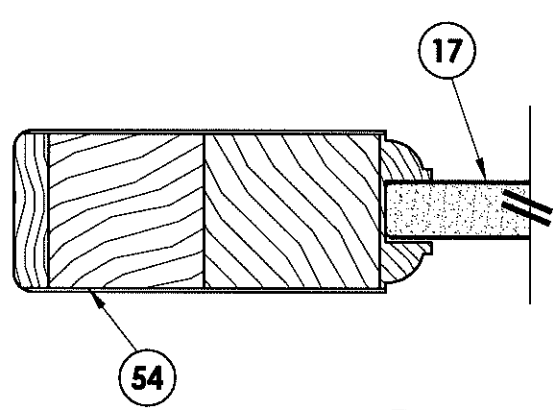
DATE:	10/06/09
SCALE:	N.T.S.
DWG. BY:	JK
CHK. BY:	LFS
DRAWING NO.:	FL-13137.4
SHEET	3 OF 16

PRODUCT:	ROGUE VALLEY DOOR	
PART OR ASSEMBLY:	DOOR PANEL DETAILS (OPAQUE)	
NO.	DATE	BY
1	10/25/12	UPDATE TO 2010 FBC

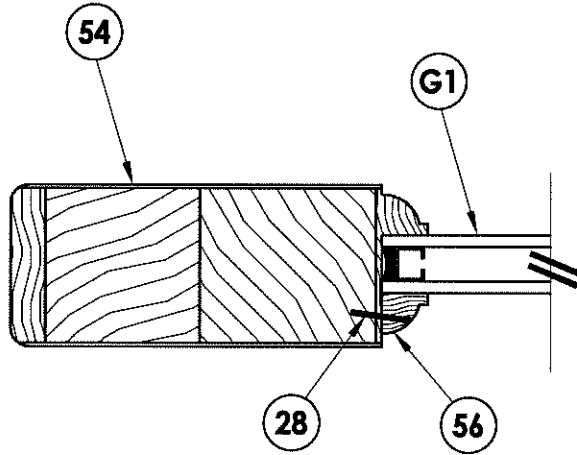
Documents Prepared By:
RW BUILDING CONSULTANTS, INC.
 P.O. Box 230 Valrico FL 33595
 Phone No.: 813.659.9197
 Florida Board of Professional Engineers
 Certificate Of Authorization No. 9813
 17-10-25-12
 Lyndon F. Schmidt, P.E. No. 43409



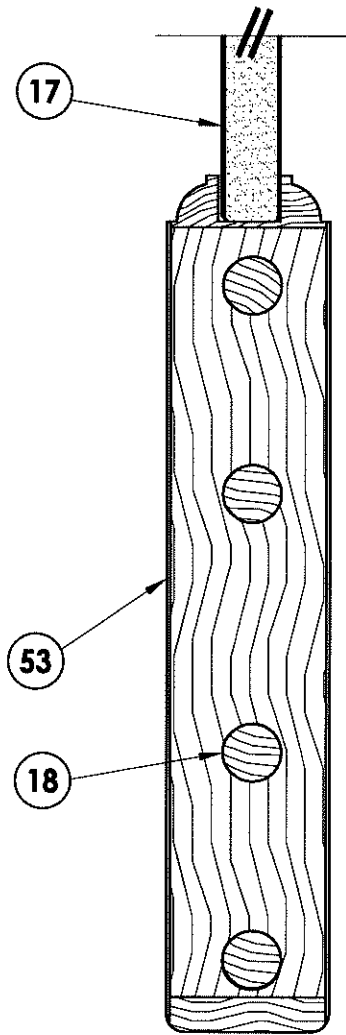
40 SIDELITE PANEL
Half lite



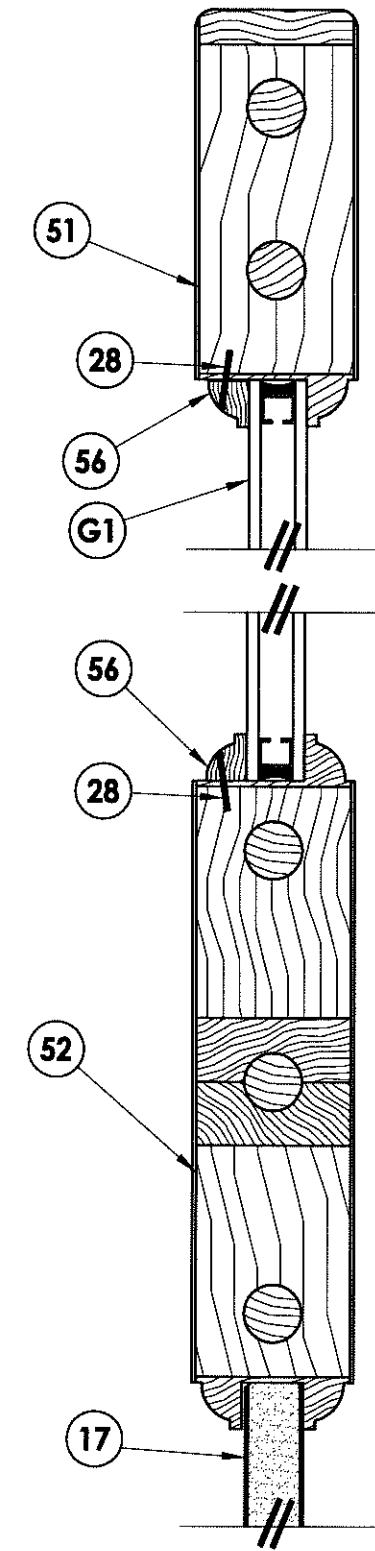
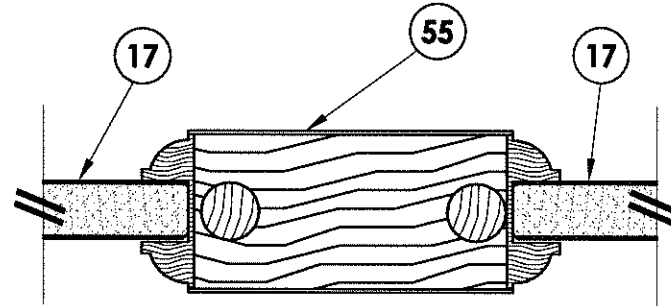
2 HORIZONTAL CROSS SECTION



1 HORIZONTAL CROSS SECTION



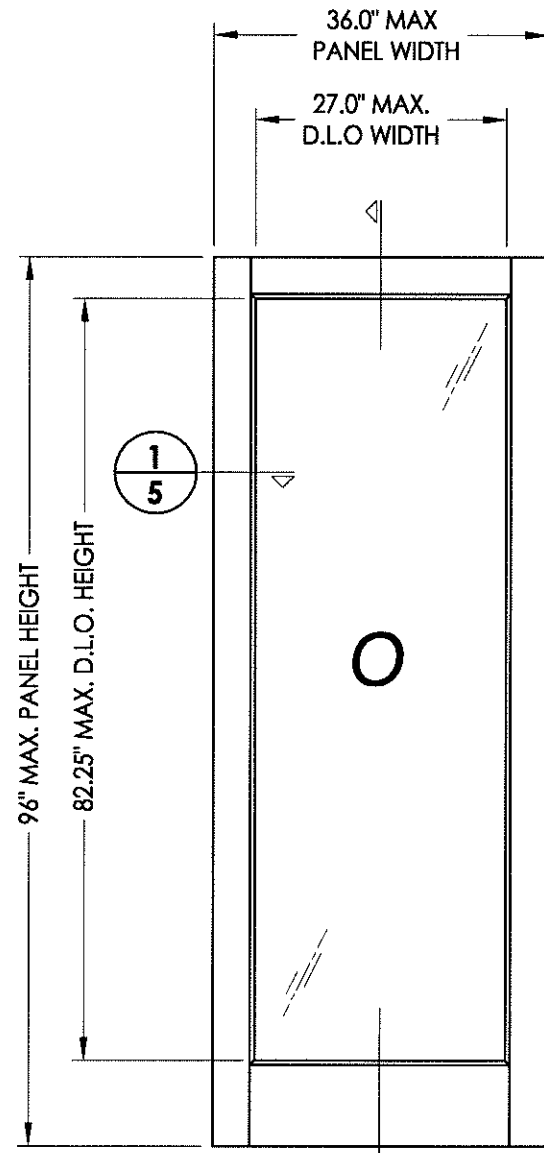
4 VERTICAL CROSS SECTION



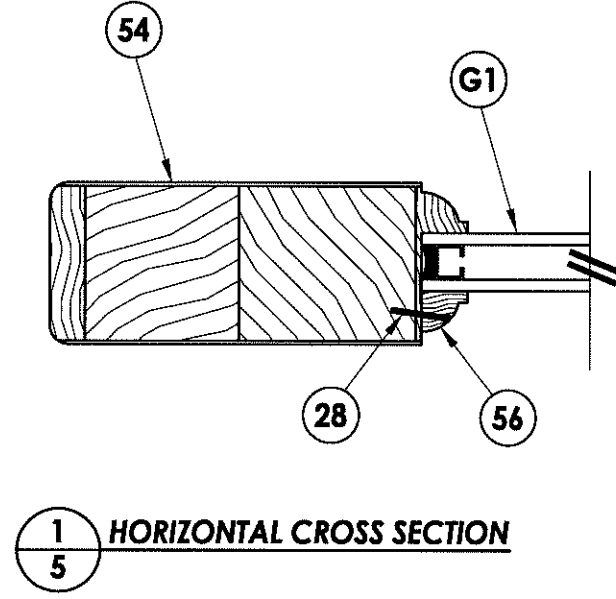
3 VERTICAL CROSS SECTION

PRODUCT: ROGUE VALLEY DOOR		PART OR ASSEMBLY: SIDELITE PANEL DETAILS (3/4 LITE)	
NO.	DATE	BY	REVISIONS
1	10/25/12	LFS	UPDATE TO 2010 FBC
DATE: 10/06/09			
SCALE: N.T.S.			
DWG. BY: JK			
CHK. BY: LFS			
DRAWING NO.: FL-13137.4			
SHEET 4 OF 16			

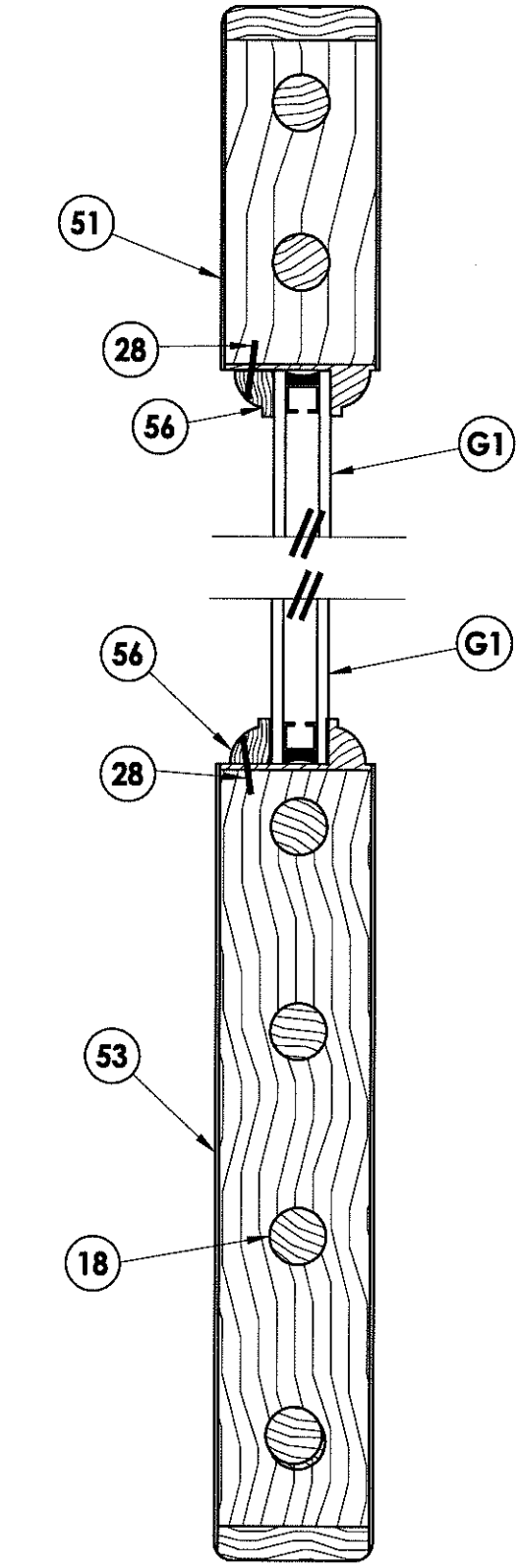
Documents Prepared By:
RW BUILDING CONSULTANTS, INC.
 P.O. Box 230 Valrico FL 33595
 Phone No.: 813.659.9197
 Florida Board of Professional Engineers
 Certificate of Authorization No. 9813
LFS re-25.12
 Lyndon F. Schmidt, P.E. No. 43409



41 SIDELITE PANEL
Full lite



1 HORIZONTAL CROSS SECTION



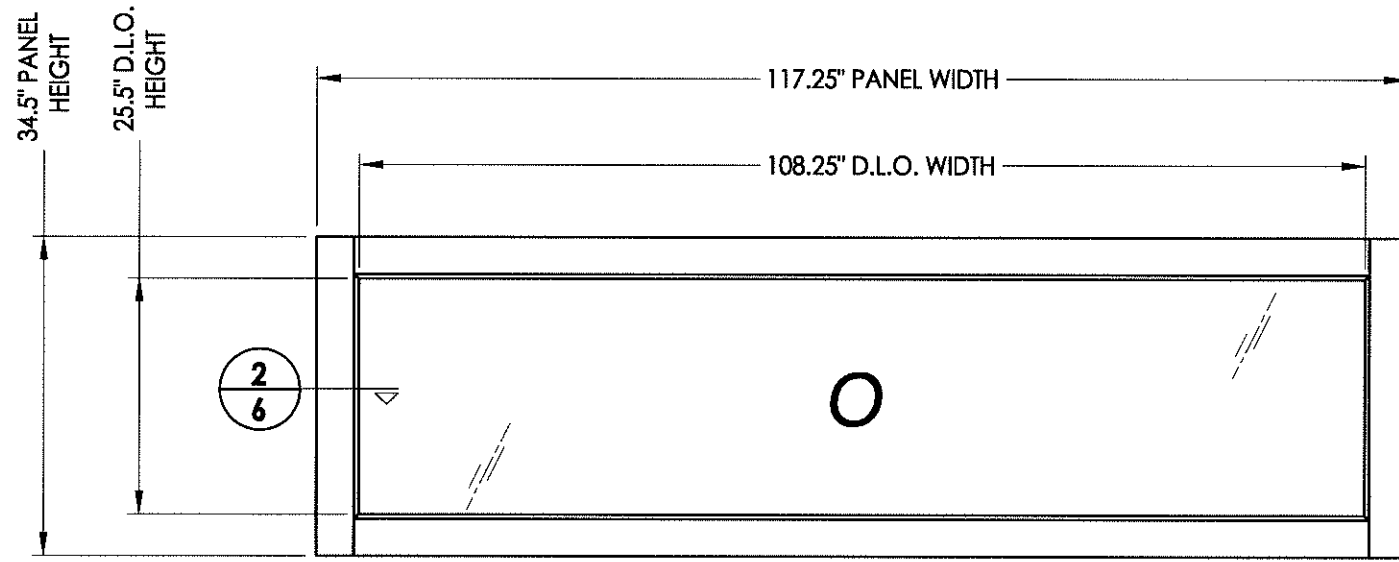
2 VERTICAL CROSS SECTION

DATE:	10/06/09
SCALE:	N.T.S.
DWG. BY:	JK
CHK. BY:	LFS
DRAWING NO.:	FL-13137.4
SHEET	5 OF 16

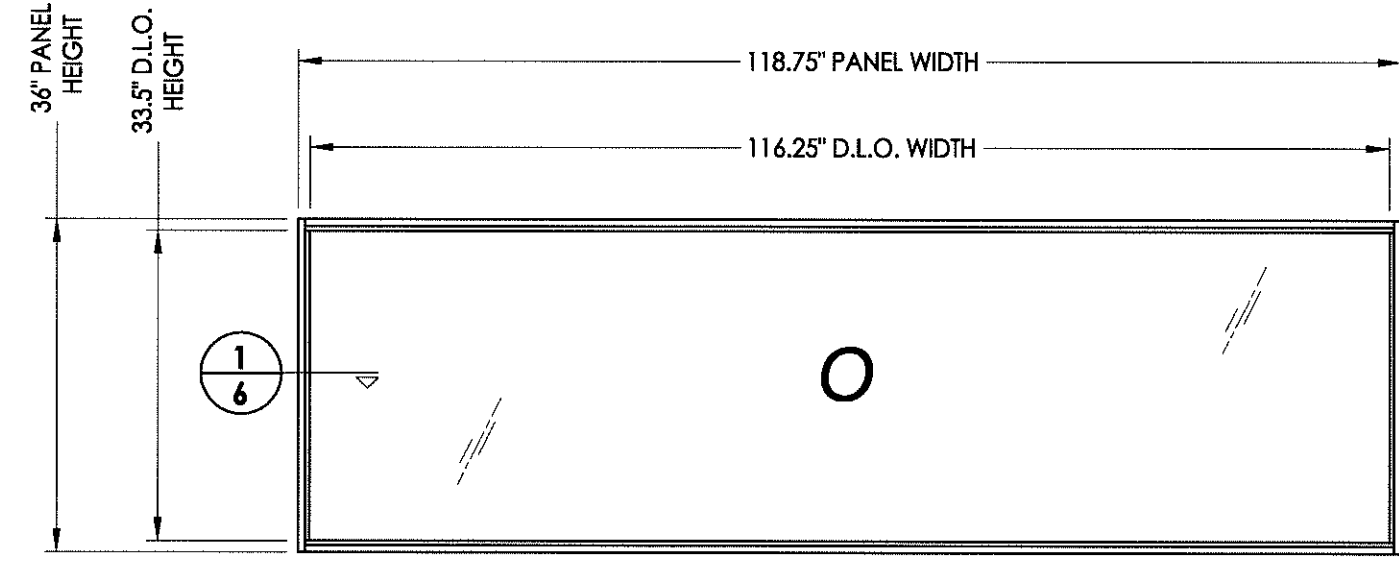
NO.	DATE	REVISIONS
1	10/25/12	UPDATE TO 2010 FBC
		LFS
		BY

PRODUCT:	ROGUE VALLEY DOOR
PART OR ASSEMBLY:	SIDELITE PANEL DETAILS (FULL LITE)

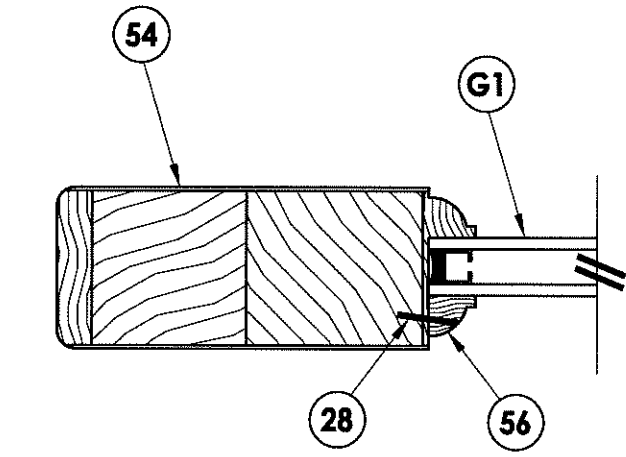
Documents Prepared By:
RW BUILDING CONSULTANTS, INC.
 P.O. Box 230 Valrico FL, 33595
 Phone No.: 813.659.9197
 Florida Board of Professional Engineers
 Certificate Of Authorization No. 9813
6.25.12
 Lyndon F. Schmidt, P.E. No. 43409



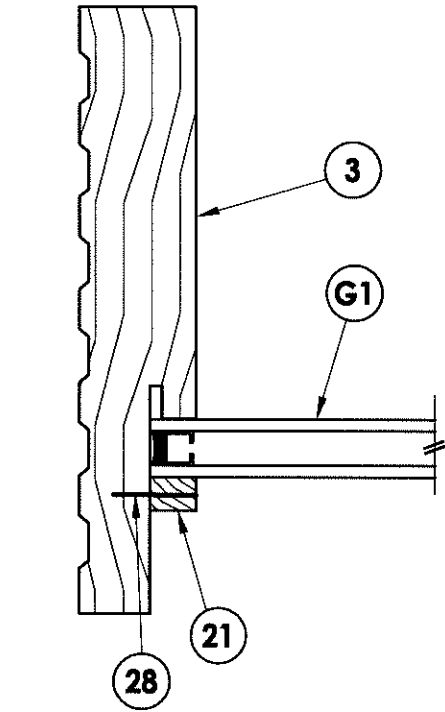
36 TRANSOM PANEL
Direct to jamb



36 TRANSOM PANEL
Direct to jamb



2
6 HORIZONTAL CROSS SECTION



1
6 HORIZONTAL CROSS SECTION

DATE:	10/06/09
SCALE:	N.T.S.
DWG. BY:	JK
CHK. BY:	LFS
DRAWING NO.:	FL-13137.4
SHEET	6 OF 16

REVISIONS	
NO.	DATE
1	10/25/12
	UPDATE TO 2010 FBC
	LFS
	BY

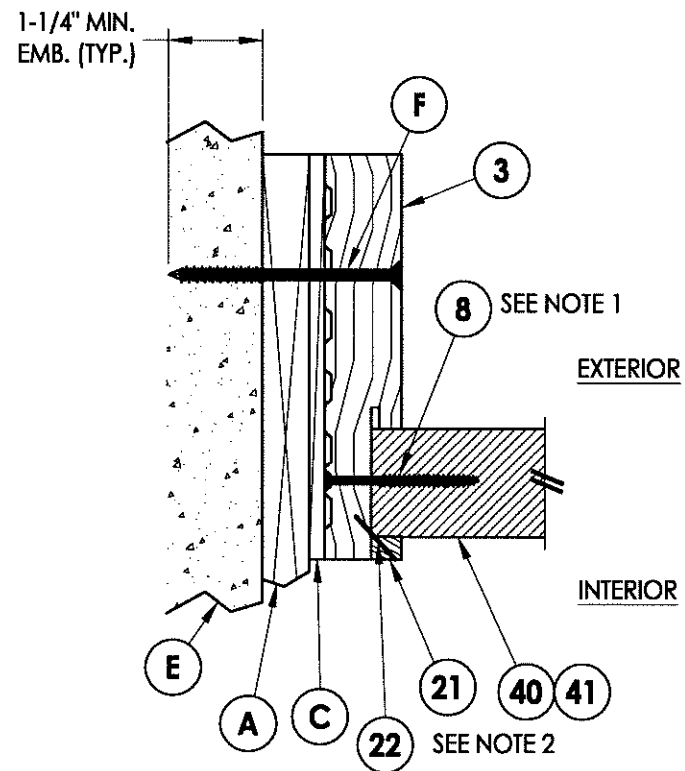
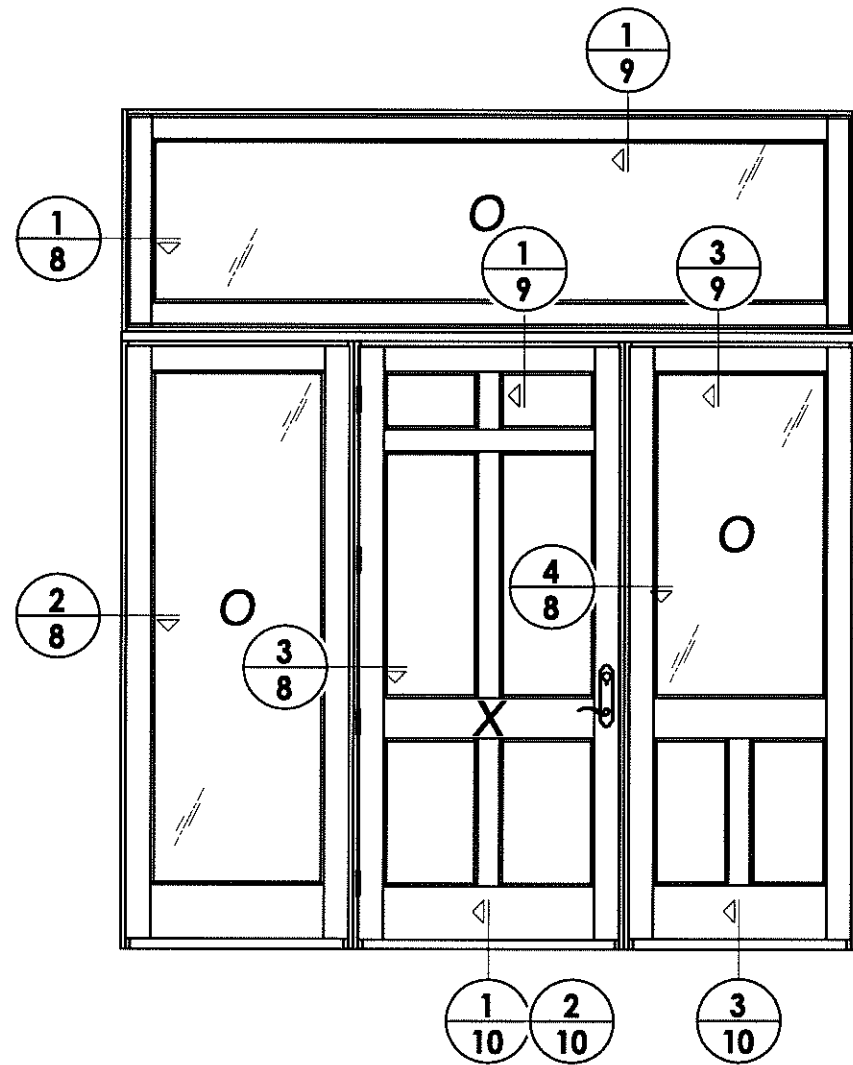
PRODUCT:	ROGUE VALLEY DOOR
PART OR ASSEMBLY:	TRANSOM PANEL DETAILS (FULL LIFE)

Documents Prepared By:
RW BUILDING CONSULTANTS, INC.
 P.O. Box 230 Valrico FL 33595
 Phone No.: 813.659.9197
 Florida Board of Professional Engineers
 Certificate Of Authorization No. 9813
JK 10.25.12
 Lyndon F. Schmidt, P.E. No. 43409

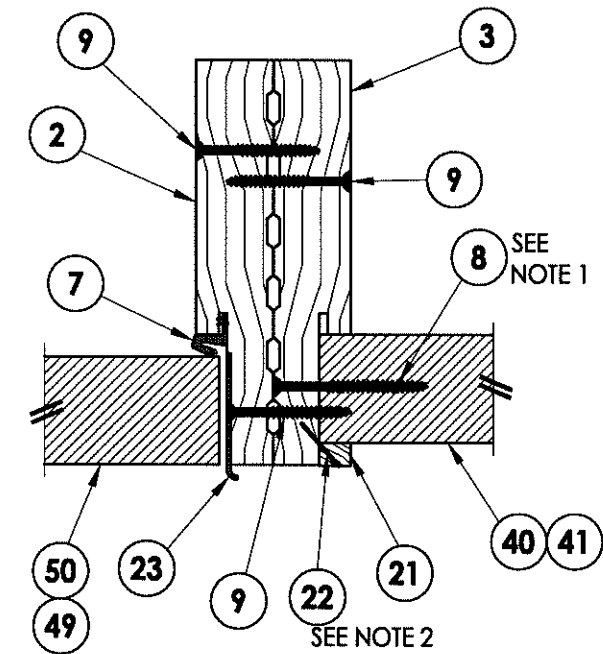
R:\A - Projects\Project Folders\proj 1401-1500\PF 1482\DWG Drawings\FL-13137\FL-13137.dwg, 8.4

NOTE:

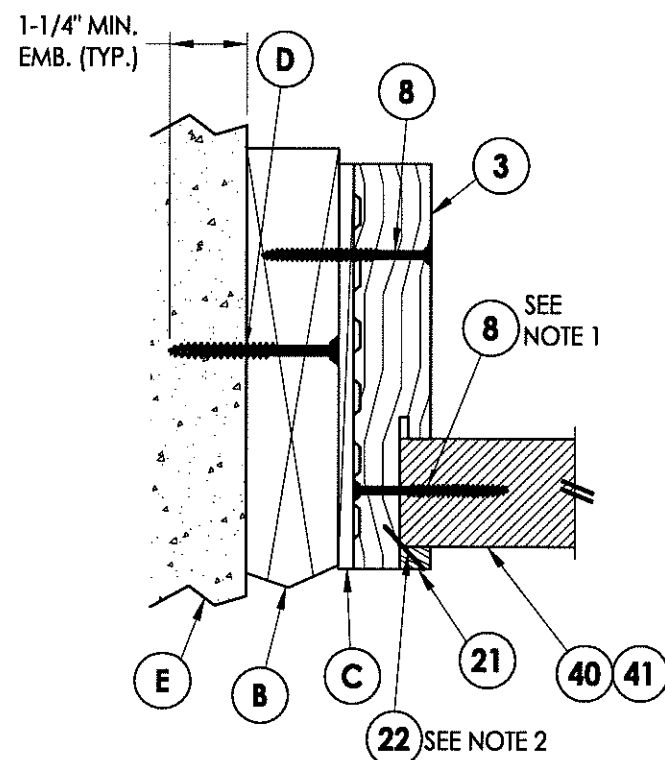
1. Attach sidelite panel to the frame with screws (#10 X 2-1/2" pfh) 2" from each end and 6" o.c.
2. Staples located 1" from each end and 8" o.c. thereafter



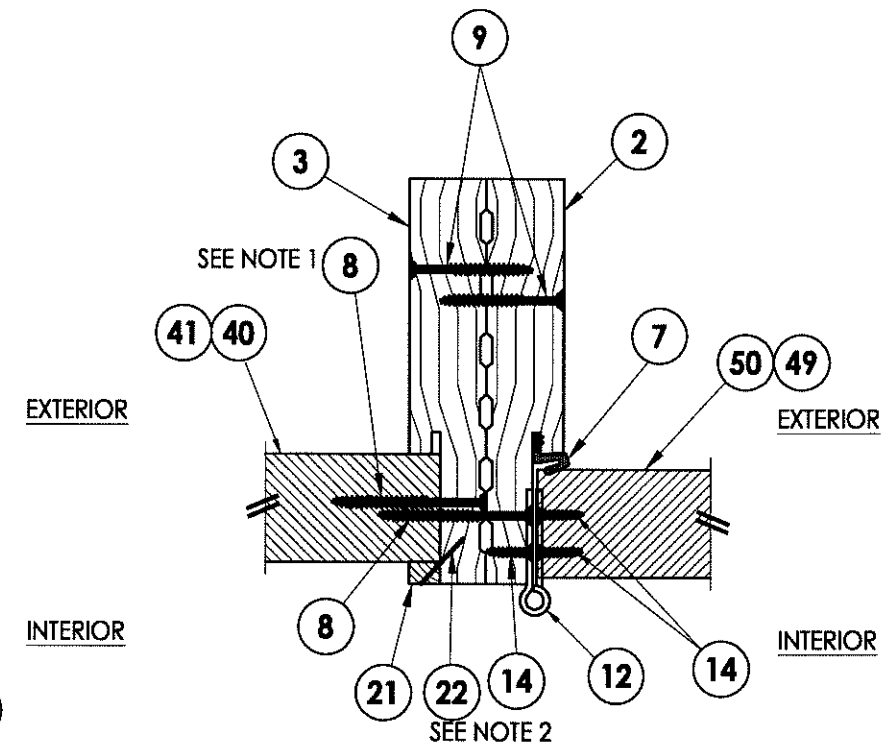
1 HORIZONTAL CROSS SECTION
8 Shown w/ 1X sub-buck



4 HORIZONTAL CROSS SECTION
8 Inswing shown - outswing also approved



2 HORIZONTAL CROSS SECTION
8 Inswing shown - outswing also approved



3 HORIZONTAL CROSS SECTION
8 Inswing shown - outswing also approved

Documents Prepared By:

RW BUILDING CONSULTANTS, INC.

P.O. Box 230 Valrico FL, 33595

Phone No.: 813.658.9197

Florida Board of Professional Engineers

Certificate Of Authorization No. 9813

Lyndon F. Schmidt, P.E. No. 43409

LFS 10-25-12

PRODUCT: ROGUE VALLEY DOOR

PART OR ASSEMBLY: HORIZONTAL CROSS SECTIONS

NO.	DATE	REVISIONS	BY
1	10/25/12	UPDATE TO 2010 FBC	LFS

DATE: 10/06/09

SCALE: N.T.S.

DWG. BY: JK

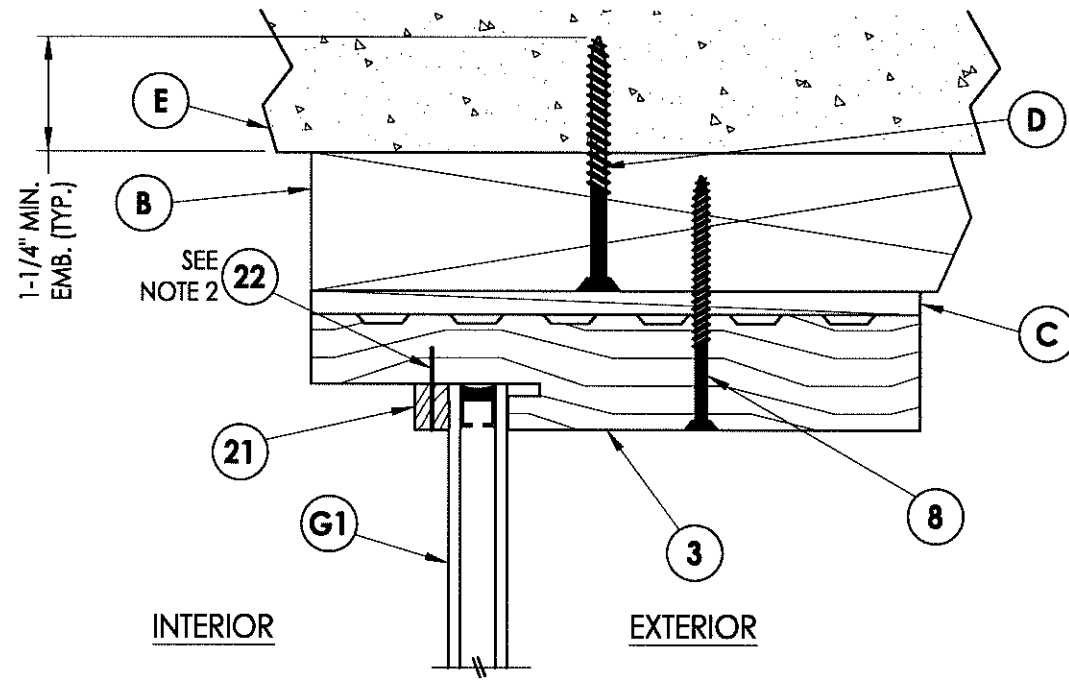
CHK. BY: LFS

DRAWING NO.: FL-13137.4

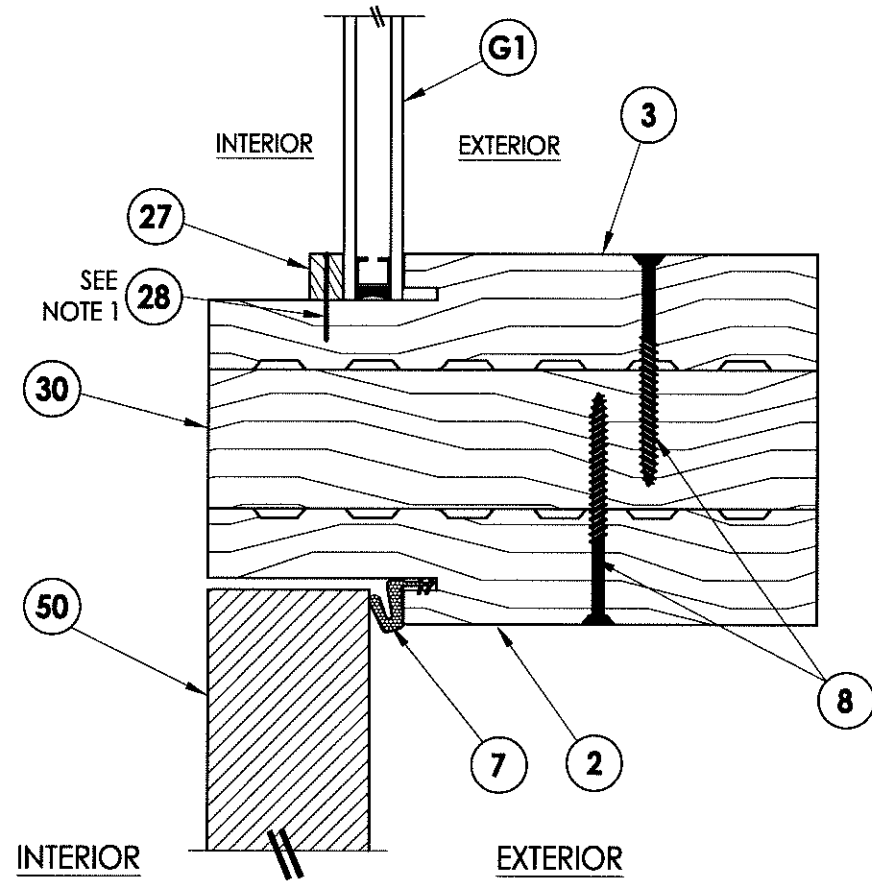
SHEET 8 OF 16

NOTE:

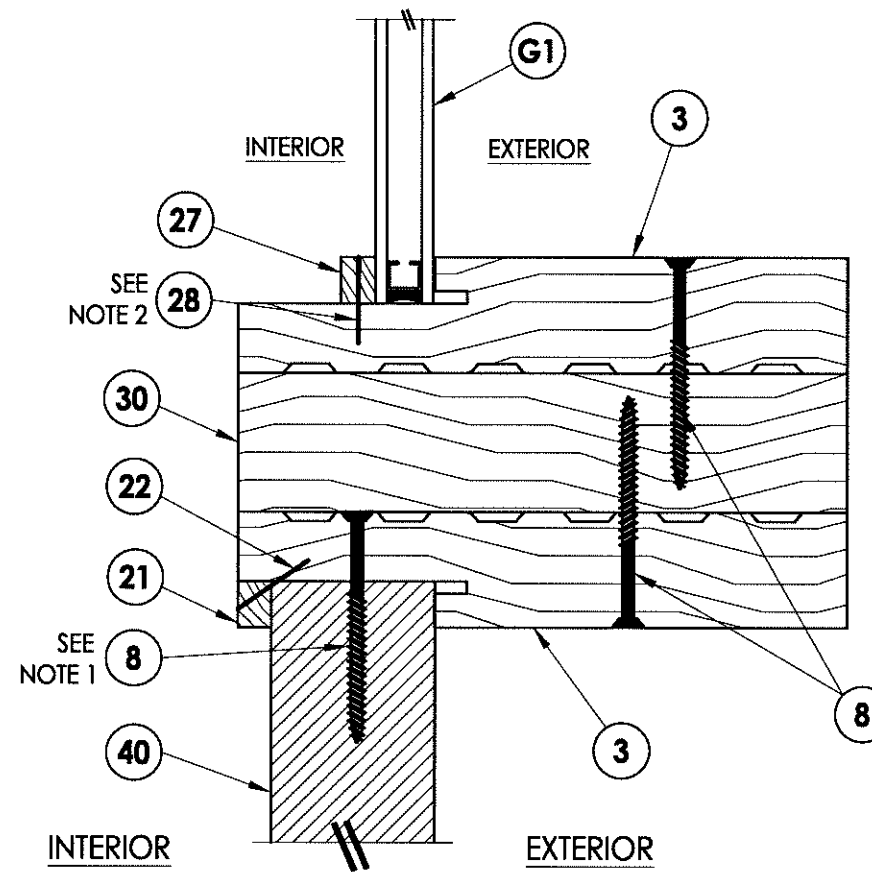
1. Attach sidelite panel to the frame with screws (#10 X 2-1/2" pfh) 2" from each end and 6" o.c.
2. Staples located 1" from each end and 8" o.c. thereafter



1
9 VERTICAL CROSS SECTION



2
9 VERTICAL CROSS SECTION



3
9 VERTICAL CROSS SECTION

Documents Prepared By:

RW BUILDING CONSULTANTS, INC.
P.O. Box 230 Valrico FL 33595
Phone No.: 813.659.9197
Florida Board of Professional Engineers
Certificate Of Authorization No. 9813
LFS 10.25.12
Lyndon F. Schmidt, P.E. No. 43409

PRODUCT: ROGUE VALLEY DOOR

PART OR ASSEMBLY: VERTICAL CROSS SECTIONS

NO.	DATE	REVISIONS	LFS	BY
1	10/25/12	UPDATE TO 2010_FBC		

DATE: 10/06/09

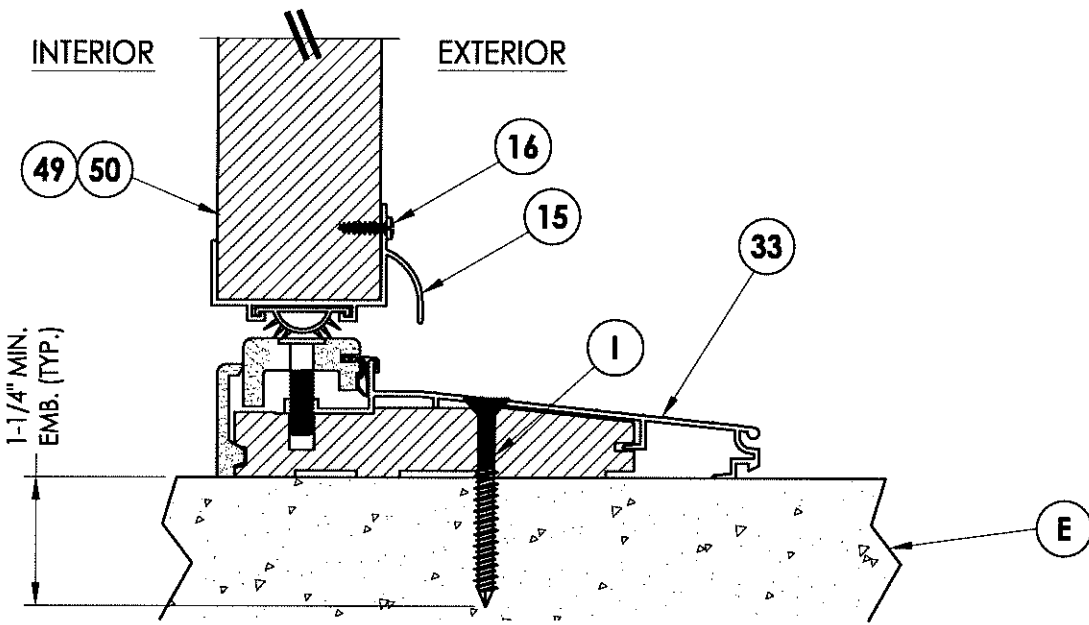
SCALE: N.T.S.

DWG. BY: JK

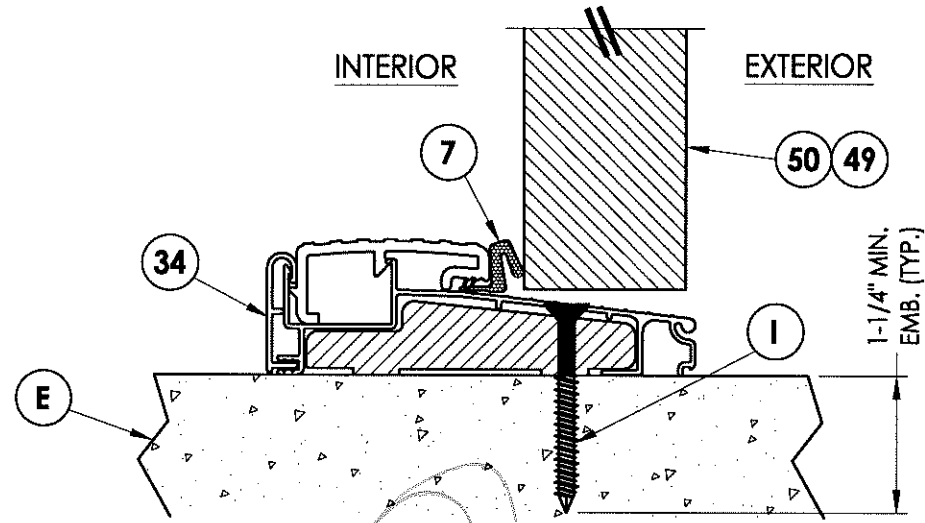
CHK. BY: LFS

DRAWING NO.: FL-13137.4

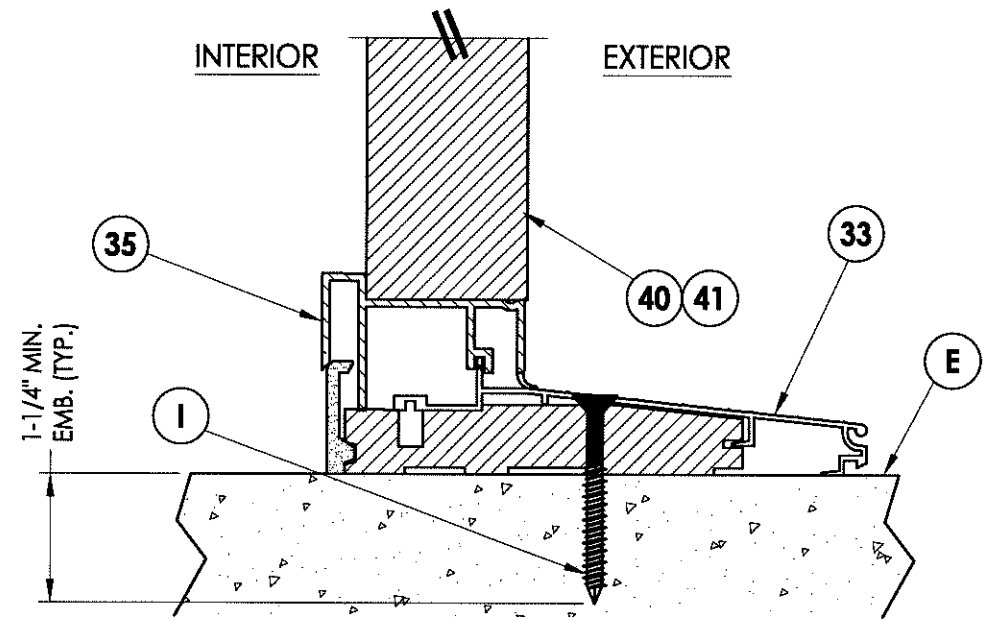
SHEET 9 OF 16



1
10 VERTICAL CROSS SECTION

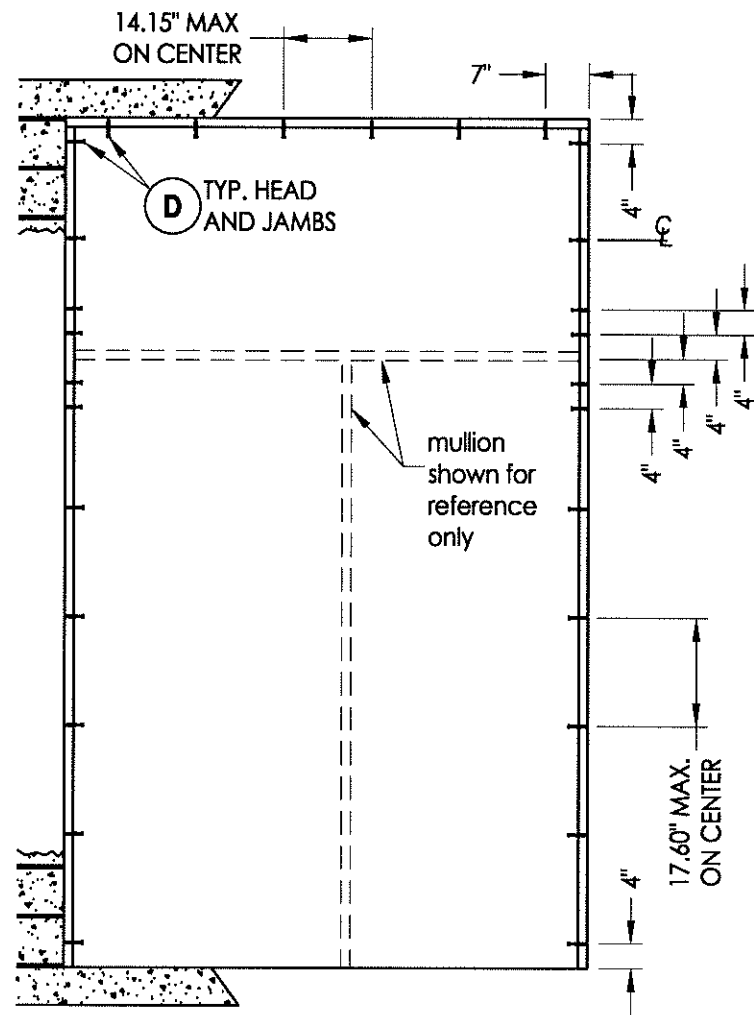


3
10 VERTICAL CROSS SECTION

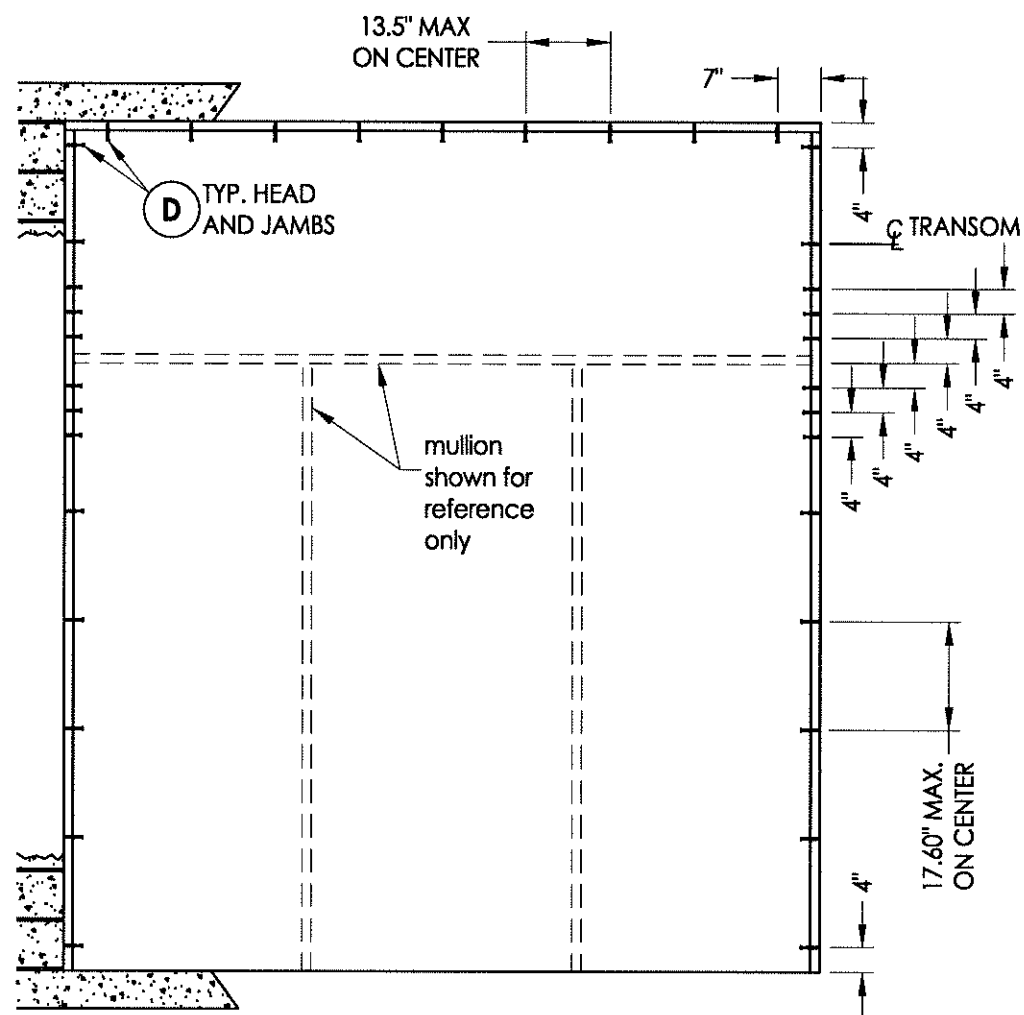


3
10 VERTICAL CROSS SECTION

Documents Prepared By:		RW BUILDING CONSULTANTS, INC. P.O. Box 230 Valrico FL 33595 Phone No.: 813.659.9197 Florida Board of Professional Engineers Certificate Of Authorization No. 9813 <i>LFS 10-25-12</i> Lyndon F. Schmidt, P.E. No. 43409	
PRODUCT:	ROGUE VALLEY DOOR		
PART OR ASSEMBLY:	VERTICAL CROSS SECTIONS		
		LFS	BY
		10/25/12	DATE
DATE: 10/06/09		REVISIONS	
SCALE: N.T.S.			
DWG. BY: JK			
CHK. BY: LFS			
DRAWING NO.: FL-13137.4			
SHEET 10 OF 16			



BUCK ANCHORING



BUCK ANCHORING

CONCRETE ANCHOR NOTES:

1. Substitution of equal concrete anchors from a different supplier may have different edge distance and center distance requirements.
2. Concrete anchor locations at the corners may be adjusted to maintain the min. edge distance to mortar joints. If concrete anchor locations noted as "MAX. ON CENTER" must be adjusted to maintain the min. edge distance to mortar joints, additional concrete anchors may be required to ensure the "MAX. ON CENTER" dimensions are not exceeded.
3. Concrete anchor table:

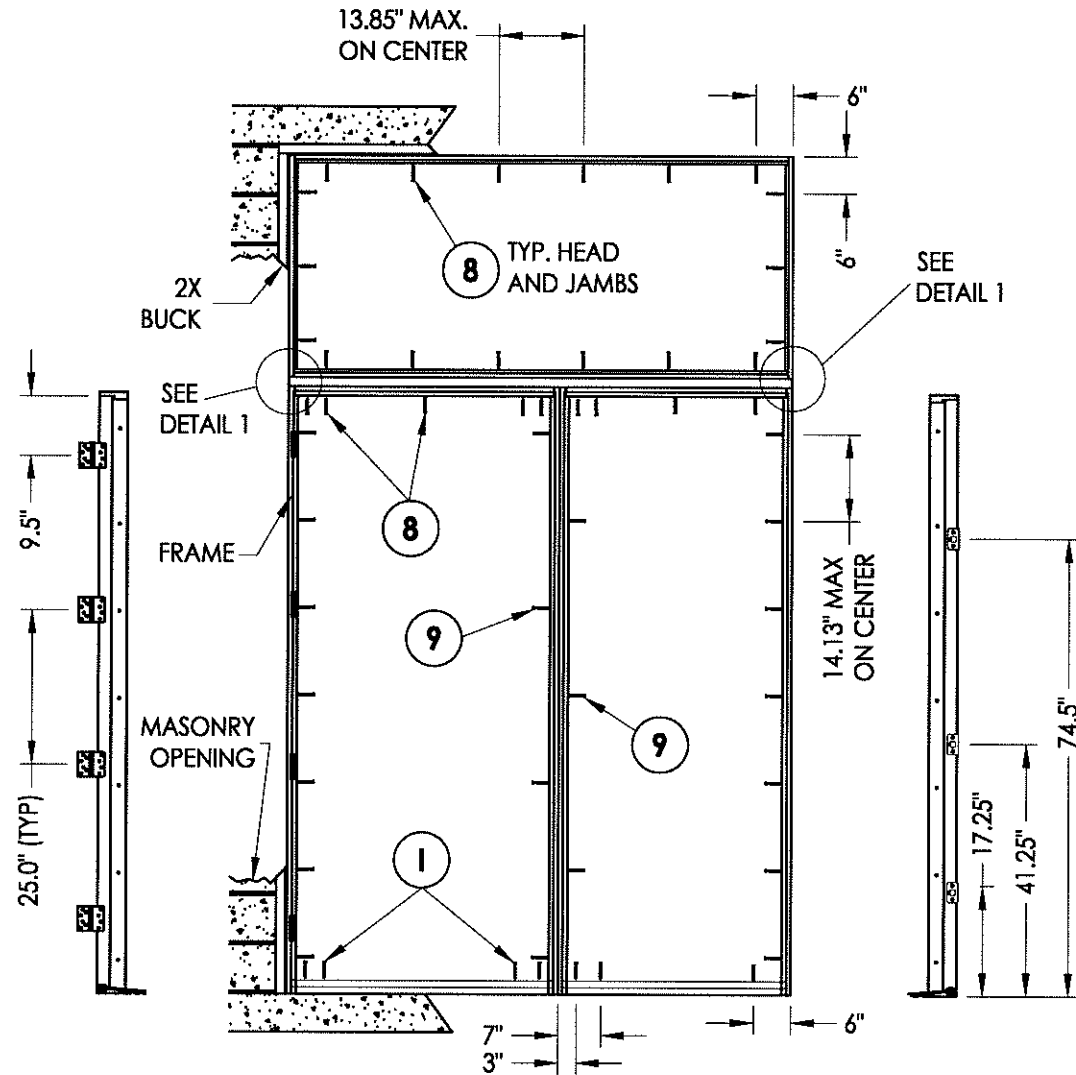
ANCHOR TYPE	ANCHOR SIZE	MIN. EMBEDMENT	MIN. CLEARANCE TO MASONRY EDGE	MIN. CLEARANCE TO ADJACENT ANCHOR
ITW	1/4"	1-1/4"	2-1/2"	3"
ELCO	1/4"	1-1/4"	1"	4"

Documents Prepared By:
RW BUILDING CONSULTANTS, INC.
 P.O. Box 230 Valrico FL 33595
 Phone No.: 813.659.9197
 Florida Board of Professional Engineers
 Certificate Of Authorization No. 9813
LF
 Lyndon F. Schmidt, P.E. No. 43409

PRODUCT: ROGUE VALLEY DOOR
 PART OR ASSEMBLY: BUCK ANCHORING

NO.	DATE	REVISIONS
1	10/25/12	UPDATE TO 2010 FBC
		LFS
		BY

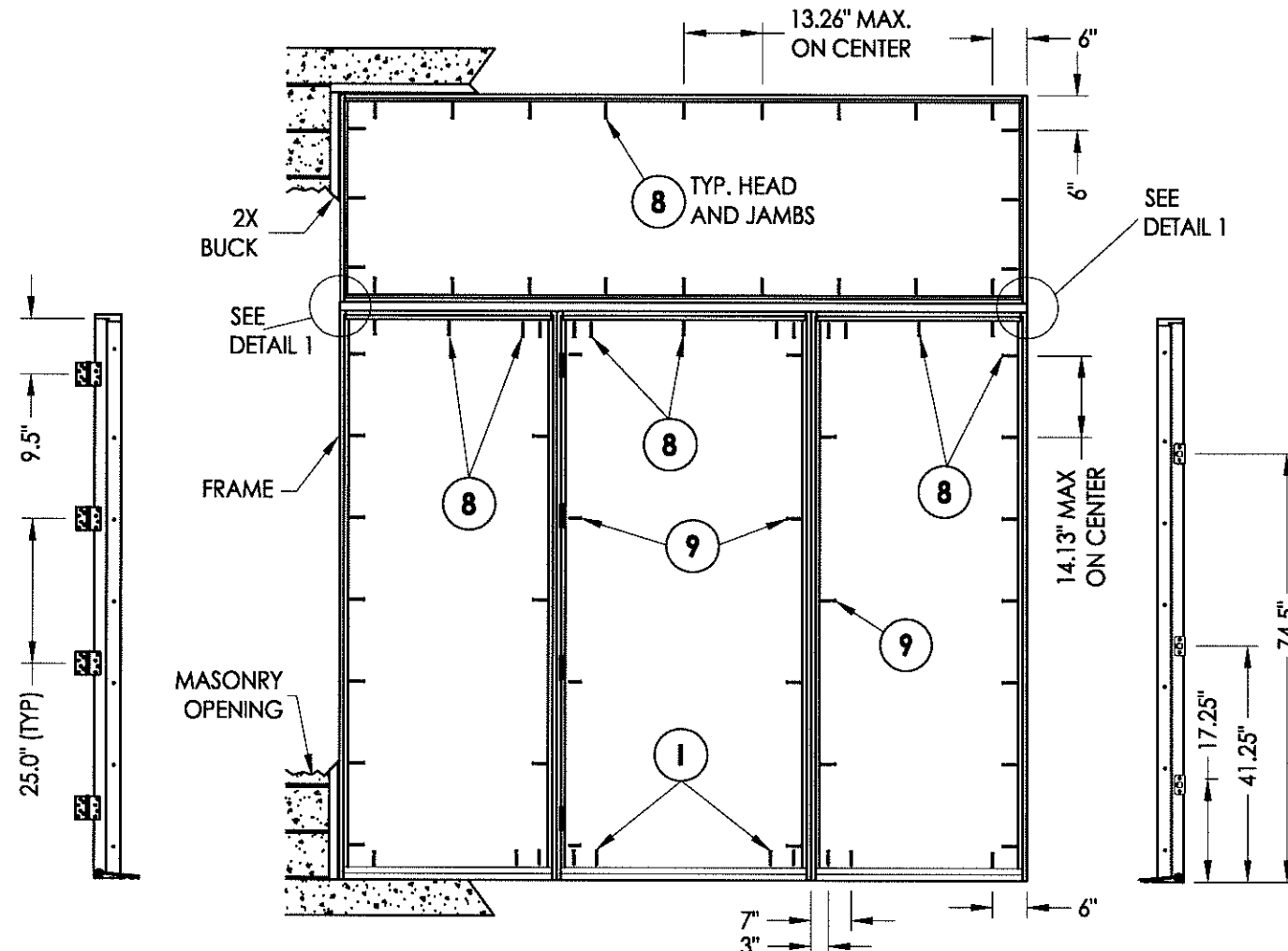
DATE: 10/06/09
 SCALE: N.T.S.
 DWG. BY: JK
 CHK. BY: LFS
 DRAWING NO.: FL-13137.4
 SHEET 11 OF 16



HINGE JAMB

FRAME ANCHORING
O/OXO

STRIKE JAMB



HINGE JAMB

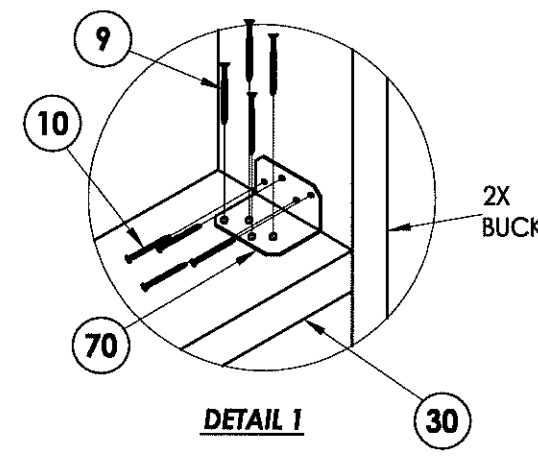
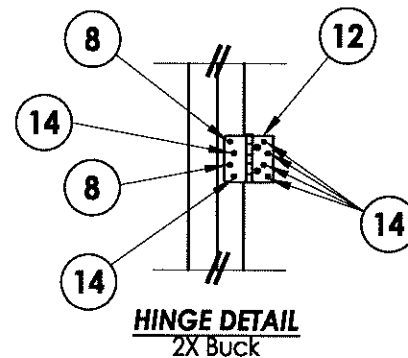
FRAME ANCHORING
O/OXO

STRIKE JAMB

CONCRETE ANCHOR NOTES:

1. Substitution of equal concrete anchors from a different supplier may have different edge distance and center distance requirements.
2. Concrete anchor locations at the corners may be adjusted to maintain the min. edge distance to mortar joints. If concrete anchor locations noted as "MAX. ON CENTER" must be adjusted to maintain the min. edge distance to mortar joints, additional concrete anchors may be required to ensure the "MAX. ON CENTER" dimensions are not exceeded.
3. Concrete anchor table:

ANCHOR TYPE	ANCHOR SIZE	MIN. EMBEDMENT	MIN. CLEARANCE TO MASONRY EDGE	MIN. CLEARANCE TO ADJACENT ANCHOR
ITW	1/4"	1-1/4"	2-1/2"	3"
ELCO	1/4"	1-1/4"	1"	4"
ITW	3/16"	1-1/4"	2-5/8"	2-1/4"



Documents Prepared By:

RW
 BUILDING CONSULTANTS, INC.
 P.O. Box 230 Valrico FL 33595
 Phone No.: 813.659.9197
 Florida Board of Professional Engineers
 Certificate of Authorization No. 9813
 10-25-12
 Lyndon F. Schmidt, P.E. No. 43409

PRODUCT:
 ROGUE VALLEY DOOR

PART OR ASSEMBLY:
 FRAME ANCHORING
 2X BUCK

NO.	DATE	BY	REVISIONS
1	10/25/12	LFS	UPDATE TO 2010 FBC

DATE: 10/06/09

SCALE: N.T.S.

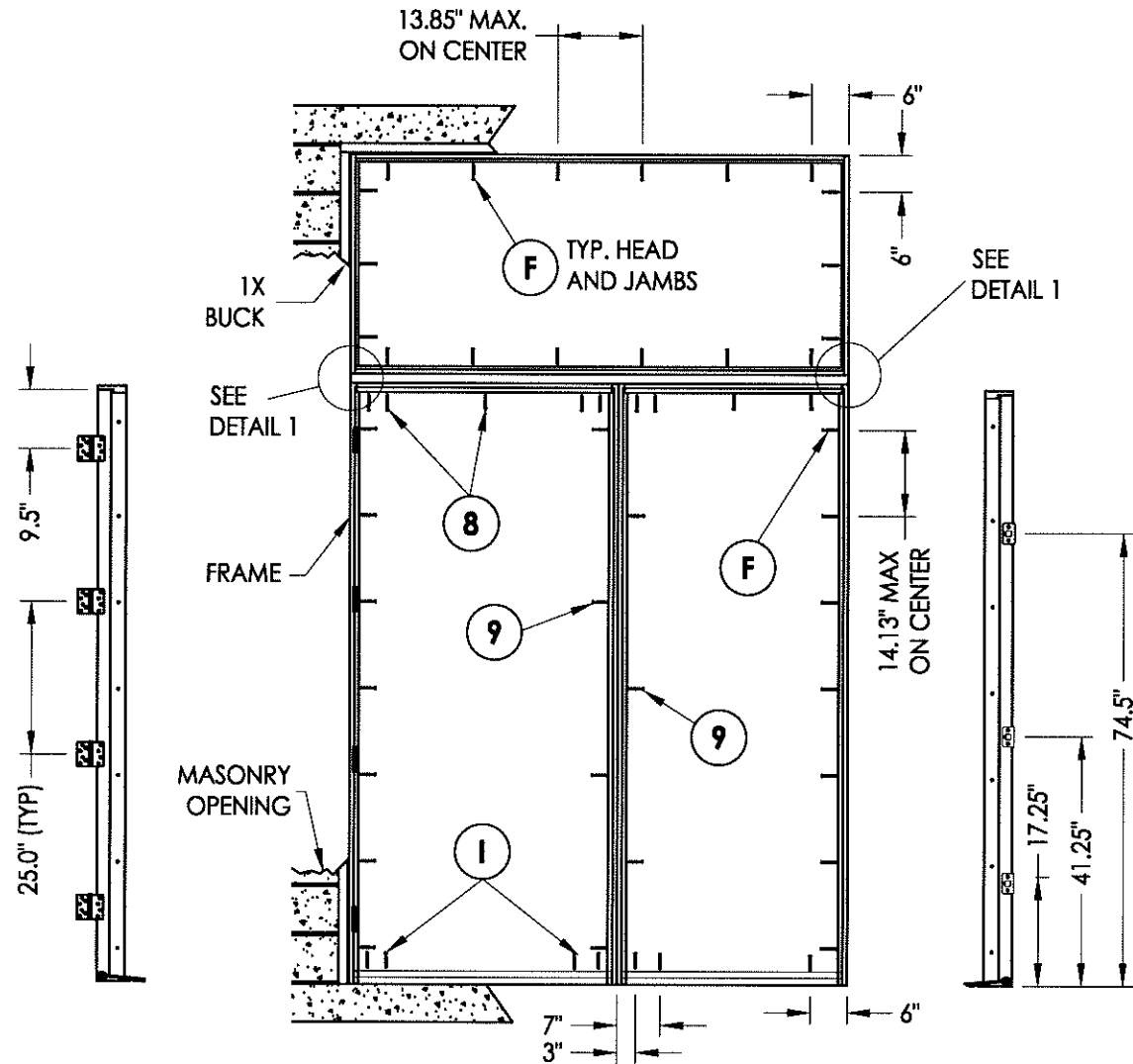
DWG. BY: JK

CHK. BY: LFS

DRAWING NO.:
 FL-13137.4

SHEET 12 OF 16

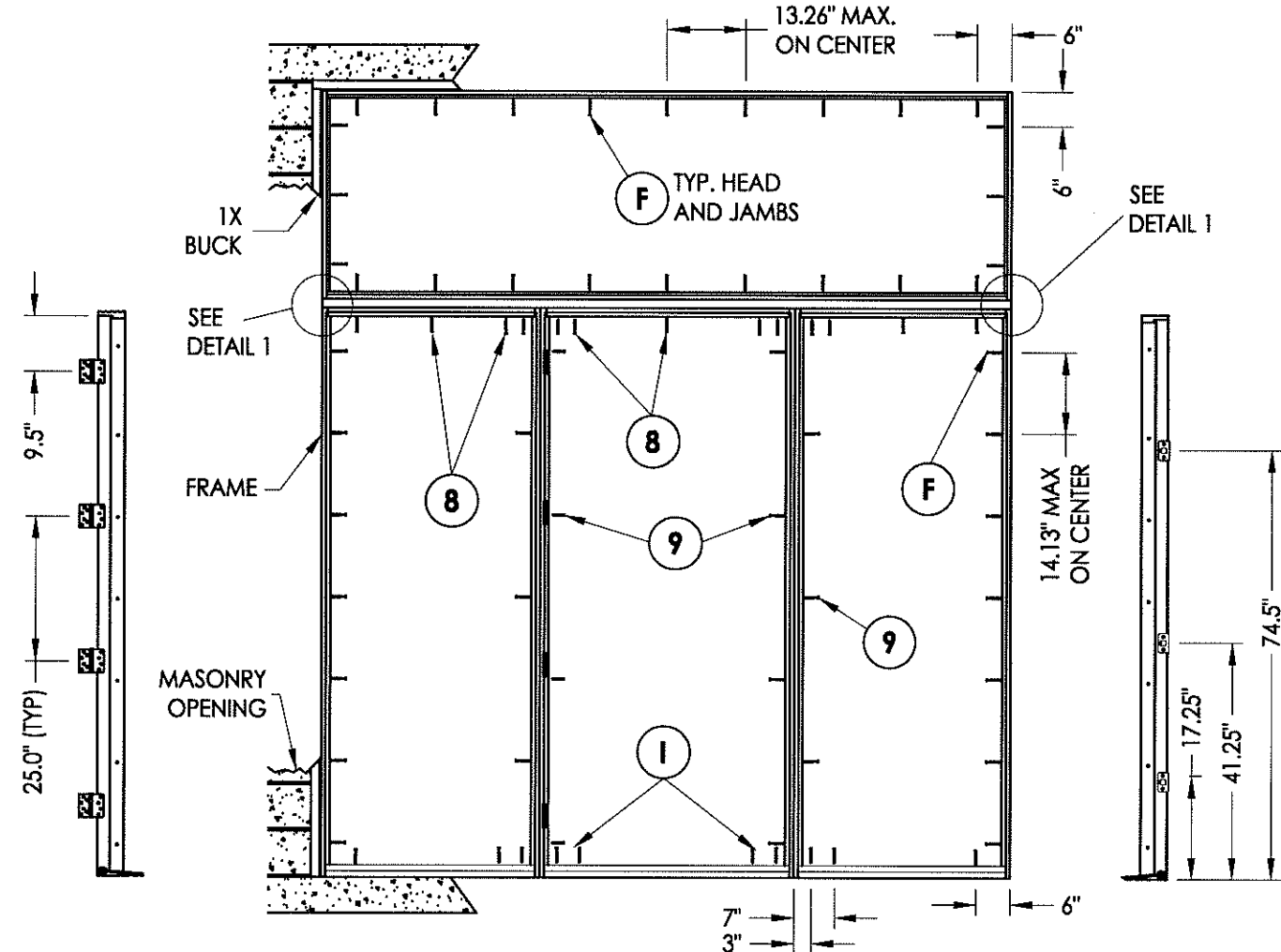
R:\VA - Projects\Project Folders\proj 1401-1500\PF 1482\DWG\RWBC Drawings\FL-13137\FL-13137.dwg, 13.4



HINGE JAMB

**FRAME ANCHORING
O/XO**

STRIKE JAMB



HINGE JAMB

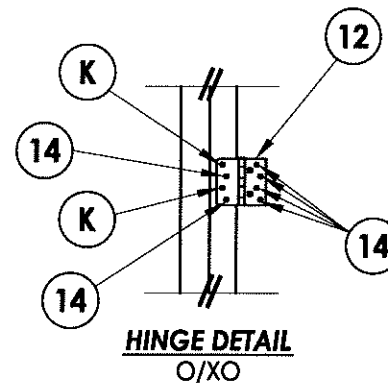
**FRAME ANCHORING
O/XO**

STRIKE JAMB

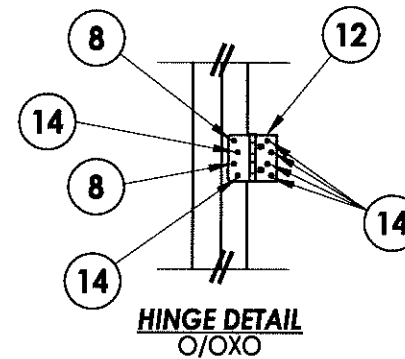
CONCRETE ANCHOR NOTES:

1. Substitution of equal concrete anchors from a different supplier may have different edge distance and center distance requirements.
2. Concrete anchor locations at the corners may be adjusted to maintain the min. edge distance to mortar joints. If concrete anchor locations noted as "MAX. ON CENTER" must be adjusted to maintain the min. edge distance to mortar joints, additional concrete anchors may be required to ensure the "MAX. ON CENTER" dimensions are not exceeded.
3. Concrete anchor table:

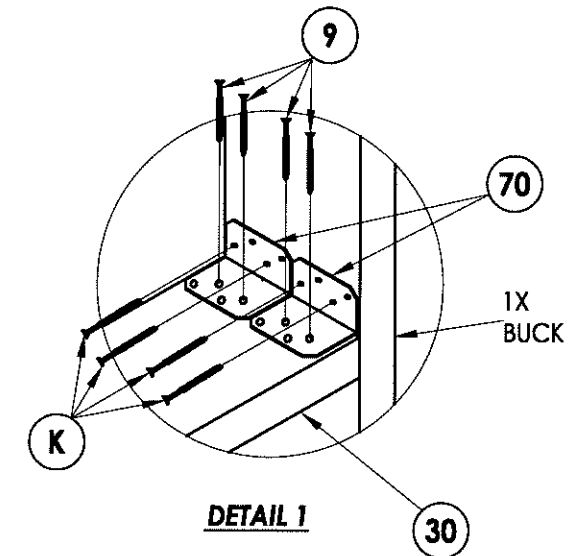
ANCHOR TYPE	ANCHOR SIZE	MIN. EMBEDMENT	MIN. CLEARANCE TO MASONRY EDGE	MIN. CLEARANCE TO ADJACENT ANCHOR
ITW	1/4"	1-1/4"	2-1/2"	3"
ELCO	1/4"	1-1/4"	1"	4"
ITW	3/16"	1-1/4"	2-5/8"	2-1/4"



**HINGE DETAIL
O/XO**



**HINGE DETAIL
O/XO**



DETAIL 1

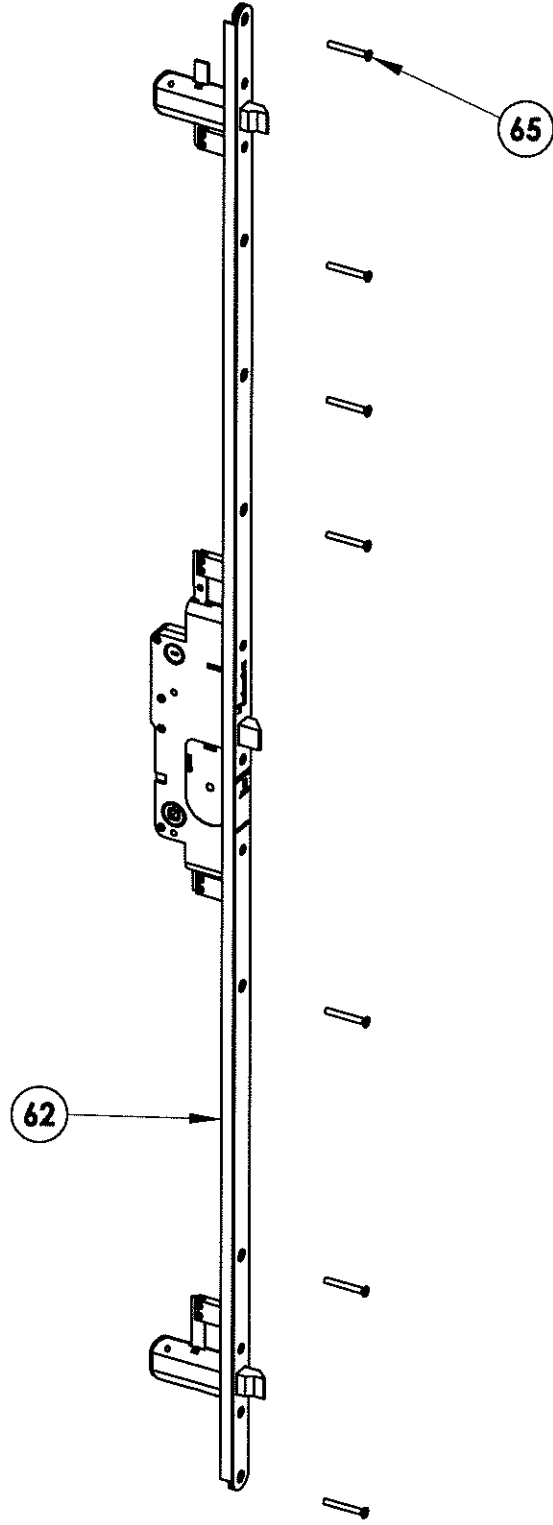
Documents Prepared By: **RW BUILDING CONSULTANTS, INC.**
P.O. Box 230 Valrico FL 33595
Phone No.: 813.659.9197
Florida Board of Professional Engineers
Certificate Of Authorization No. 9813
Lyndon F. Schmidt, P.E. No. 43409

PRODUCT: ROGUE VALLEY DOOR
PART OR ASSEMBLY: FRAME ANCHORING 1X BUCK

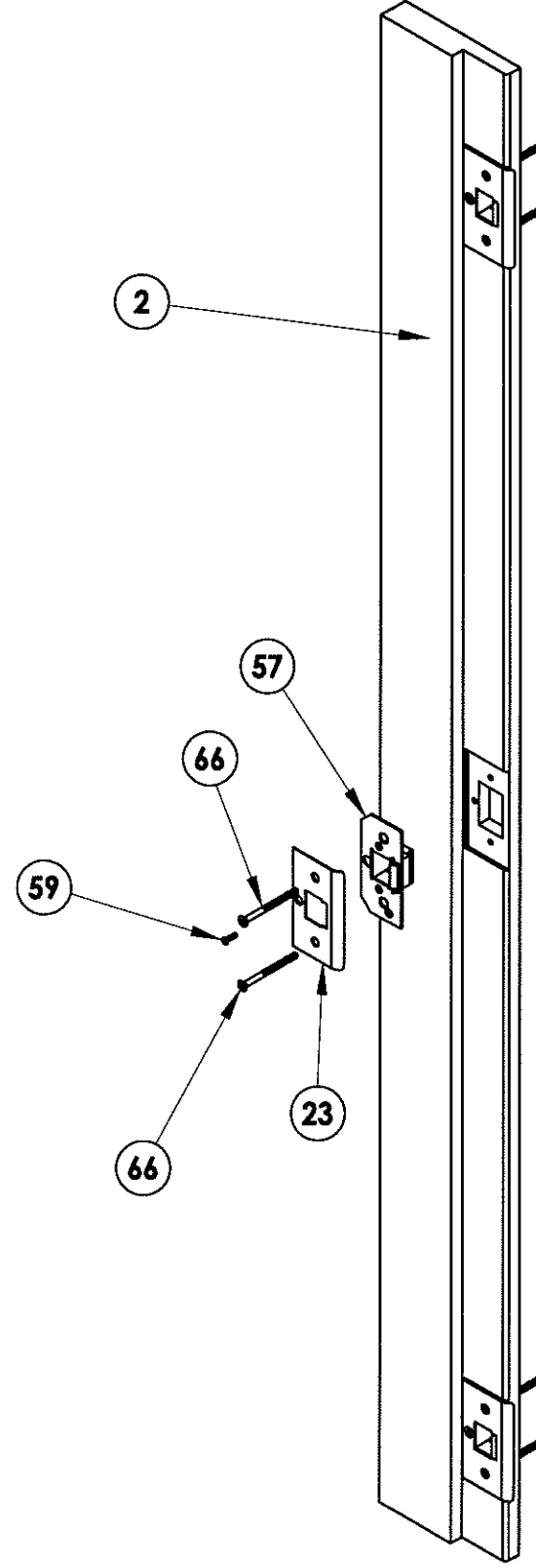
NO.	DATE	BY	REVISIONS
1	10/25/12	LFS	UPDATE TO 2010 FBC

DATE: 10/06/09
SCALE: N.T.S.
DWG. BY: JK
CHK. BY: LFS
DRAWING NO.: FL-13137.4
SHEET 13 OF 16

© 2009 R.W. BUILDING CONSULTANTS INC.



3 POINT LOCK DETAIL
W & F Trilennium



STRIKE DETAIL

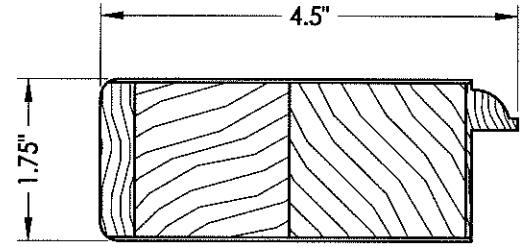
DATE: 10/06/09
 SCALE: N.T.S.
 DWG. BY: JK
 CHK. BY: LFS
 DRAWING NO.: FL-13137.4
 SHEET 14 OF 16

NO.	DATE	REVISIONS
1	10/25/12	UPDATE TO 2010 FBC
		LFS
		BY

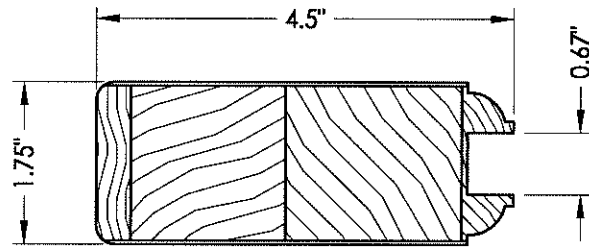
PRODUCT: ROGUE VALLEY DOOR
 PART OR ASSEMBLY: LOCK DETAILS

Documents Prepared By:
RW BUILDING CONSULTANTS, INC.
 P.O. Box 230 Valrico FL 33595
 Phone No.: 813.658.9197
 Florida Board of Professional Engineers
 Certificate Of Authorization No. 9813
Lyndon F. Schmidt
 Lyndon F. Schmidt, P.E. No. 43409

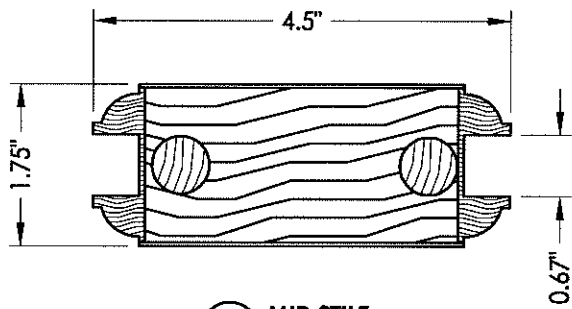
NOTE:
 1. Pins are 5/8" x 5" centered half in the rail, half in the stile.
 2. Door panel wood SG. >= 0.42



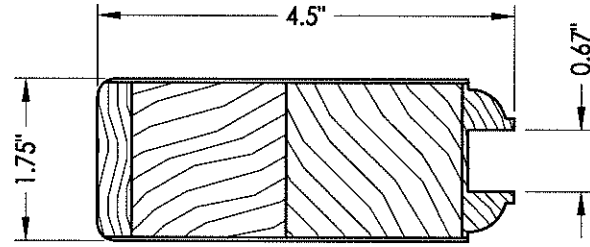
54 HINGE AND LATCH STILE
Glazed



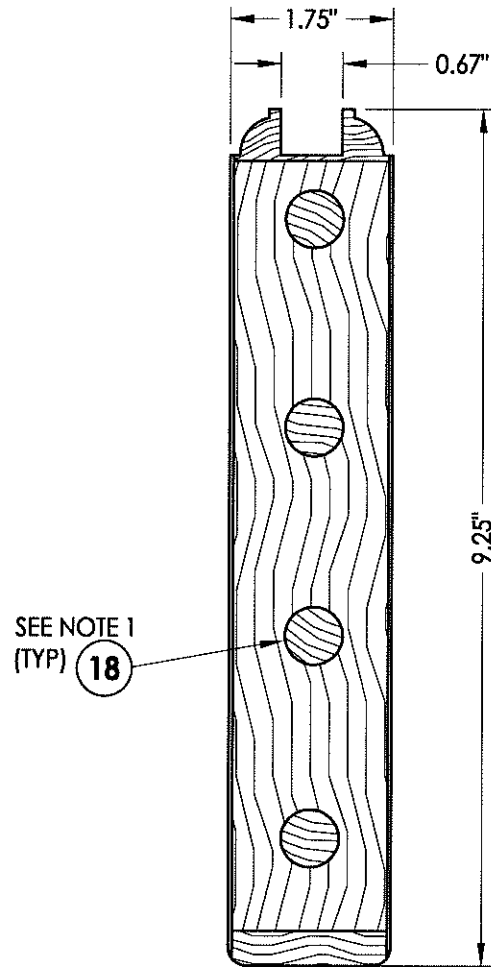
54 HINGE AND LATCH STILE
Panel infill



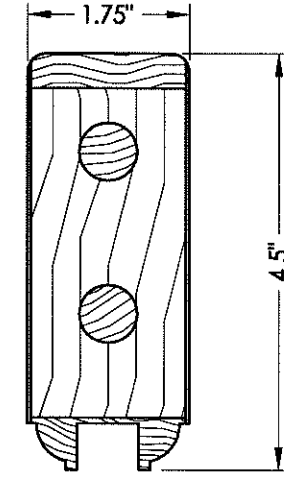
55 MID STILE



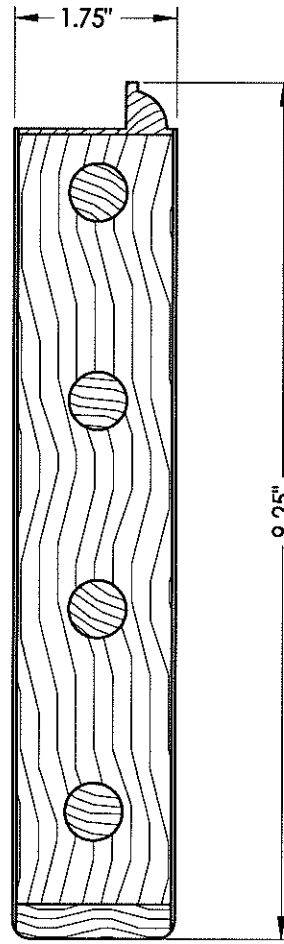
54 HINGE AND LATCH STILE
Panel infill



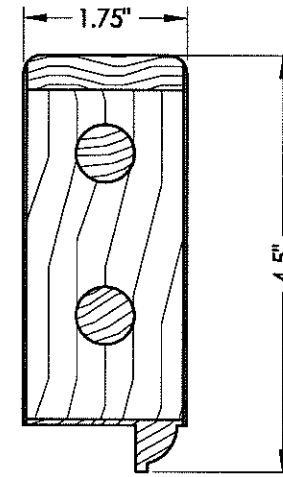
53 BOTTOM RAIL
Panel infill



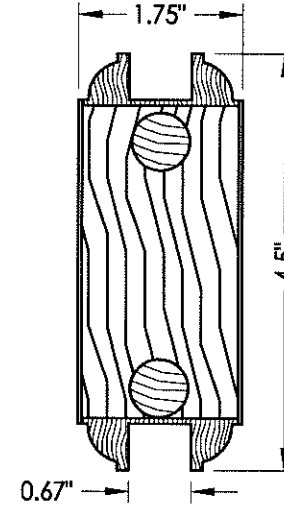
51 TOP RAIL
Panel infill



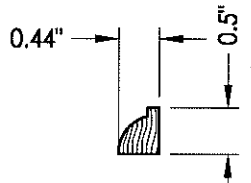
53 BOTTOM RAIL
Glazed



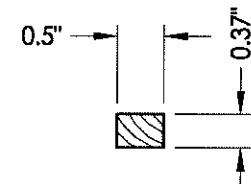
51 TOP RAIL
Glazed



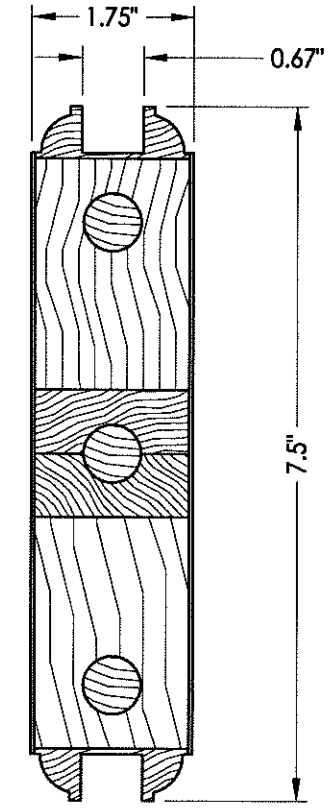
58 MID RAIL
Panel infill



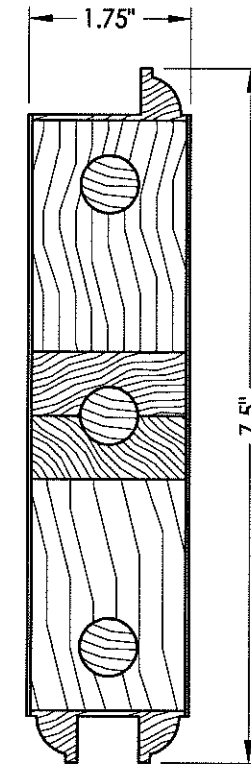
56 GLASS STOP



21 PANEL STOP



52 LOCK RAIL
Panel infill



52 LOCK RAIL
Glazed

SEE NOTE 1
(TYP) **18**

Documents Prepared By:
RW BUILDING CONSULTANTS, INC.
 P.O. Box 230 Valrico FL 33595
 Phone No.: 813.659.9197
 Florida Board of Professional Engineers
 Certificate of Authorization No. 9813
 Lyndon F. Schmidt, P.E. No. 43409

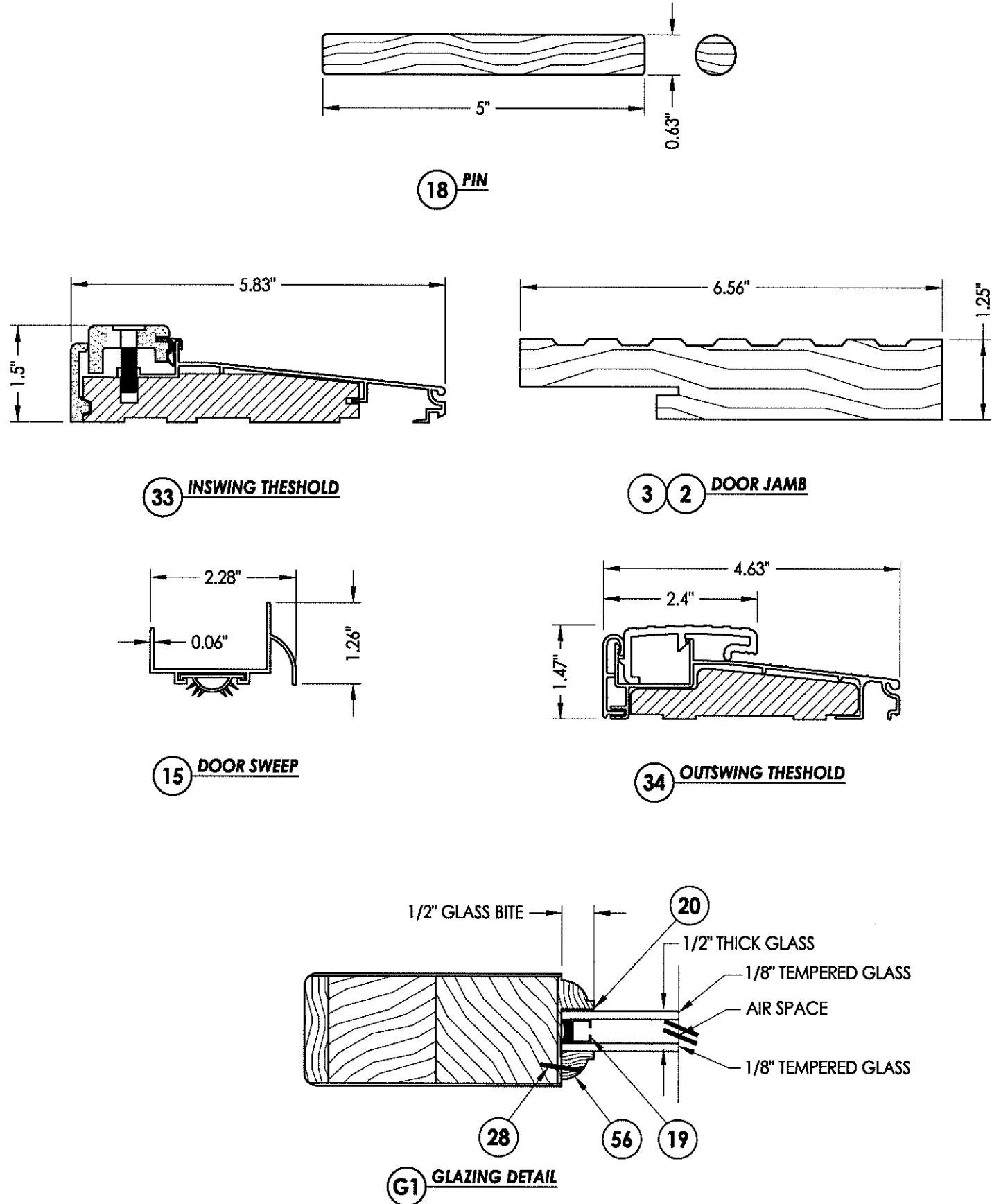
PRODUCT: ROGUE VALLEY DOOR
 PART OR ASSEMBLY: COMPONENTS

NO.	DATE	REVISIONS	BY
1	10/25/12	UPDATE TO 2010 FBC	LFS

DATE: 10/06/09
 SCALE: N.T.S.
 DWG. BY: JK
 CHK. BY: LFS
 DRAWING NO.: FL-13137.4
 SHEET 15 OF 16

© 2009 R.W. BUILDING CONSULTANTS INC.

BILL OF MATERIALS		
ITEM #	DESCRIPTION	MATERIAL
A	1X BUCK SG >= 0.55	WOOD
B	2X BUCK SG >= 0.55	WOOD
C	1/4" MAX. SHIM SPACE	-
D	1/4" X 2-3/4" ELCO OR ITW CONCRETE SCREW	STEEL
E	MASONRY - 3,192 PSI MIN. CONCRETE CONFORMING TO ACI 301 OR HOLLOW BLOCK CONFORMING TO ASTM C90	CONCRETE
F	1/4" X 3-3/4" ELCO OR ITW CONCRETE SCREW	STEEL
I	1/4" X 2-1/4" ELCO OR ITW CONCRETE SCREW	STEEL
K	3/16" X 3-1/4" ITW CONCRETE SCREW	STEEL
2	DOOR HEADER AND JAMB 1-1/4" X 6 - 9/16" (SG => 0.42 PSF)	WOOD
3	SIDELITE HEADER AND JAMB 1-1/4" X 6 - 9/16" (SG => 0.42 PSF)	WOOD
7	WEATHERSTRIP	FOAM
8	#10 X 2-3/4" PFH WS	STEEL
9	#9 X 2" PFH WS	STEEL
10	#10 X 1-1/2" PPH	STEEL
12	HINGE	STEEL
14	1/4" X 3/4" PFH WS	STEEL
15	DOOR SWEEP	ALUM
16	#6 X 1/2" PPH WS	STEEL
17	PANEL INFIL	WOOD/COMP
18	5/8" DIA. X 5" PIN	WOOD
19	.375" GLAZING SPACER	ALUM
20	SEALANT	SILICONE
21	3/8" X 1/2" PANEL STOP	WOOD
22	1" BRAD	STEEL
23	MULTI-POINT STRIKE PLATE	STEEL
28	1/4" X 1" 16GA. STAPLE	STEEL
30	1-1/2" MULLION SG. ≥ 0.55	WOOD
33	THRESHOLD (INSWING)	-
34	THRESHOLD (OUTSWING)	-
35	INSWING SIDELITE ADAPTER	-
36	TRANSOM	-
40	SIDELITE PANEL (3/4 LITE)	-
41	SIDELITE PANEL (FULL LITE)	-
49	DOOR PANEL (GLAZED)	-
50	DOOR PANEL (OPAQUE)	-
51	TOP RAIL	WOOD
52	LOCK RAIL	WOOD
53	BOTTOM RAIL	WOOD
54	HINGE AND LATCH STILE	WOOD
55	MID STILE	WOOD
56	GLASS STOP	WOOD
57	BACKING PLATE	STEEL
58	MID RAIL	WOOD
59	#8 X 3/4" PFH MACHINE SCREW	STEEL
62	LOCK ASSEMBLY 3 POINT LOCK (SINGLE DOOR) W&F Trilennium	STEEL
65	#10 X 1-1/2" PFH WOOD SCREW	STEEL
66	#8 X 1-1/4" PFH MACHINE SCREW	STEEL
70	MULLION CLIP SIMPSON Strong-tie A23Z	STEEL



Documents Prepared By:
RW BUILDING CONSULTANTS, INC.
 P.O. Box 230 Valrico FL 33595
 Phone No.: 813.659.9197
 Florida Board of Professional Engineers
 Certificate of Authorization No. 9813
 Lyndon F. Schmidt, P.E. No. 43409
 10.25.12

PRODUCT:	ROGUE VALLEY DOOR	
PART OR ASSEMBLY:	BILL OF MATERIALS, COMPONENTS AND GLAZING DETAIL	
NO.	DATE	BY
1	10/25/12	LFS
REVISIONS		
DATE:	10/06/09	
SCALE:	N.T.S.	
DWG. BY:	JK	
CHK. BY:	LFS	
DRAWING NO.:	FL-13137.4	
SHEET	16	OF 16